

www.timberwindows.com

INSPIRATIONS

BEAUTIFUL, HAND-MADE TIMBER WINDOWS & DOORS

10th EDITION

INSIDE

REAL HOMES TRANSFORMED

MAKE AN ENTRANCE -
DOOR STYLES

THE SECRETS OF KERB APPEAL

THE ART OF RESTORATION

10 REASONS TO CHOOSE
TIMBER WINDOWS

LISTED BUILDINGS
PRODUCT RANGE







Welcome to

INSPIRATIONS

FROM TIMBER WINDOWS

As one of the most important decisions you will make for your property, choosing the most appropriate windows and doors is likely to take both time and quite possibly, a fair bit of research. So we would like to welcome you to our *10th* edition of the Inspirations lifestyle magazine.

How better to explain what a difference beautiful real timber windows and doors can make than by showing you around the properties of some of our delighted customers. With a cross - section of interesting projects that showcase the quality and beauty of our timber windows and doors, we also demonstrate how these projects really can enhance the value of your home.

In this issue we take a look at The Art of Restoration and The Secrets of Kerb Appeal. If that leaves you wanting more, then a visit to your local Timber Windows showroom may be in order - you'll find expert advice and a comprehensive range to browse at your leisure.



TIMBER
WINDOWS

T: 0800 030 2000

E: enquiries@timberwindows.com

www.timberwindows.com

C O N T E N T S

8
DETAIL
IN DESIGN



14
CALMING
NEUTRALS



16
BOLD &
BEAUTIFUL



18
PITCH
PERFECT



22
CLASSIC PROJECTS
2004 TO 2021



24
A GLASS
ACT



28
GREAT
OUTDOORS



30
FORMER
GLORY



34
DRAWN TO
THE PAST



38
COUNTRY
CLASSIC



44
TRADITIONAL
TOUCHES



48
CURVE
APPEAL



C O N T E N T S

52
CHARACTER
BUILDING



54
MAKE AN
ENTRANCE



58
DECO
PERFECTION



60
CONTEMPORARY
CONVERSION



62
COUNTRY
STYLE



66
GEORGIAN
HERITAGE



69
BLEND
RIGHT IN



70
TRUE
CRAFTSMANSHIP



76
AS GOOD
TODAY



80
IT'S ALL SUSTAINABLE, SO
DOESN'T HARM THE EARTH



81
10 REASONS TO CHOOSE
TIMBER WINDOWS



82
NATURE'S
HUE



C O N T E N T S

86
FIRST
IMPRESSIONS



90
HOME
FRONT



92
COTTAGE
CHIC



94
TAKING
ROOT



98
HIGH
STANDARDS



102
SOMETHING OLD
SOMETHING NEW



106
BRIGHT
OUTLOOK



114
THE ART
OF RESTORATION



116
MAKE A
HOUSE A HOME



120
SUPERB
SASHES



124
CLASSIC
COMPOSITION



C O N T E N T S

126
CRAFTED
COMFORT



132
QUALITY
SHINES THROUGH



136
THE SECRETS
OF KERB APPEAL



138
EYE
ON DESIGN



142
RURAL
RETREAT



146
PERFECT
FORMATION



152
LET THE
LIGHT FLOW



156
THROUGH
THE GENERATIONS



160
TIMBER WINDOWS
LISTED



170
THE REASSURANCE
OF A LOCAL SPECIALIST



171
44 STUNNING SHOWROOMS
NATIONWIDE



175
HELPING YOU
TAKE THE NEXT STEPS



Detail IN DESIGN





“We have really noticed the difference through the winter – we no longer have draughts seeping in through the windows and doors – we’ve felt lovely and toasty!”

Bardwell entrance door in 'Blue Grey'
featuring Newbury handle and manufactured
in Engineered European Redwood.





Cottage casement windows finished in 'Cream' with 18mm astragal glazing bars; manufactured in Engineered European Redwood.

Tucked away in a remote valley, the immaculately kept home of Mr & Mrs Pritchard has been further enhanced with a little help from Timber Windows.

The beautiful location had previously brought its challenges, *"we're rather open to the elements here and the old windows were in desperate need of replacement, we wanted efficient double glazing and to keep the house looking its best."*

A number of cottage casements and sets of French doors were fitted throughout the entire house, all finished in 'Cream' with 18mm astragal glazing bars. A Bellbroughton design entrance door is finished in the vibrant shade of 'Blue Grey'.

"The cottage casements allow the light to now flood through, and it's an amazing feature to be able to open them right up, completely unobstructed and let the fresh air in."

"The new windows and doors have breathed new life into our home."





“Our whole experience with Timber Windows has been a very positive one – we are simply delighted.”



Cottage casement windows and French doors finished in 'Cream' featuring 18mm astragal glazing bars; manufactured in Engineered European Redwood.

“When we first encountered the installation team, we were immediately put at ease – they were polite, professional and tidy.”

CALMING NEUTRALS

“We were keen to ensure the front of the house was in keeping with its 1930s style.”



Mr & Mrs Lacey moved out of their Oxfordshire home, unchanged since the 1970s, while the whole house underwent a renovation.

"Changing from yellow pebble dash to a brick and render finish, gave us some tricky decisions to make on the colour of the windows and door, but ultimately we're very happy with how it has all turned out" Mrs Lacey describes.

The family chose a uniform finish of 'Calm Grey' across all the flush casement windows and Chalfont front door.

"We always felt that timber was the most appropriate and nicest material choice for this house."

"The whole process was very smooth...Timber Windows dealt directly with our builders and installed as part of the programme...we didn't even see the installation take place!"



"The whole process was very smooth."



Flush Casement windows with 18mm astragal bars accompanied by a Chalfont entrance door with Polished Chrome ironmongery, all finished in 'Calm Grey'.

BOLD & Beautiful



“**It was horrendous**”

Mr & Mrs Cockcroft say of the 1970's door that plagued the front of their charismatic home in the northern English town of Castleford.

“It had a rotten cill, had to be slammed shut, wouldn't open and close properly during different seasons and was causing the hall floor to get damp”

A spectacular Westonbirt door with a sunburst design toplight now adorns the ornate stone entrance way, finished in Oxford Blue with polished chrome ironmongery.

Commenting on the installation process itself, Mr & Mrs Cockcroft happily describe, *“the fitters prepared us for the possibility there'd be some damage to the internal woodwork, but there was nothing; they did a really good and extremely neat job.”*



Westonbirt entrance door with toplight, finished in 'Oxford Blue' featuring Etched Sun patterned glass design, manufactured in Engineered Meranti Hardwood. Hardware consists of a Polished Chrome Doctor's knocker, Pull escutcheon and Traditional letterbox.



“**The door is much more befitting of the house now**”





Pitch PERFECT

This substantial former farmhouse in Wolverhampton originates from the Georgian era with a Victorian extension, and until as recently as 25 years ago served as a fully operational farm residence; it is now home to Mr & Mrs Denton, having bought it in the early 2000s.

“Having the new windows is a double-edged sword really” the Denton’s say with a smile; “they’re so well matched to the originals that they don’t look hugely different and you’d hardly know they’d been replaced, or not from a distance at least but this is a very good thing as we’ve also gained modern benefits.”

Having lived with the old windows in their house for some 12 years, their relief is understandable, *“the house had a mixture of metal windows and wooden sash windows; all in various states of dis-repair, some were painted shut and all were draughty.”*

The aim of the project was to improve the comfort factors but also to create a uniform look throughout the house, whilst retaining the traditional appearance and ensuring everything was like for like.

“

We visited 3 different companies, and had decided that we preferred the Timber Windows products on offer but we didn't think they'd be within our reach financially. When the quotation came through we were pleasantly surprised that they were well within our budget and we could get what we wanted.”



Flush casements, Slim Sash windows and French doors finished in Cream with brass ironmongery. Stable doors finished in Black to the external face and Cream internally, also with brass ironmongery. All items manufactured in Engineered Meranti Hardwood.

A total of 45 individual windows and doors were replaced, with the installation time at three weeks for a project of this size, “no amount of words can prepare you for the disruption this scale of works will bring, but we were given a good, comprehensive, logical programme of the process in advance. The team were all very nice and very sympathetic, and did all they could to minimise their impact on us.”

“Opening and closing the sash windows is a simple pleasure, but we do love to, just because we can now!”

The products here included an array of slim box sash windows, various flush casements including bay windows, French doors and a duo of stable doors, finished in Cream except for the stable doors which are Black on the outside and Cream internally. Every item is slightly different too in terms of styling and extras such as sash horns to match the various parts and periods of the house.

Overall, the Denton's are happy with the results, *“we're very pleased indeed and delighted with the movement of the sash windows; opening and closing them is a simple pleasure but we do love to, just because we can now. The stable doors are a fantastic addition too, aesthetically pleasing and giving much more light inside; they're very practical with pets and children.”*

“One elevation of the house overlooks a busy road, which is where our daughter's bedroom is; she hardly hears any noise from the road now as a result of the new windows, so this is also very pleasing.”





“ The house has become a wonderful warm retreat ”



“ ...THIS IS THE BEST THING WE HAVE EVER DONE TO THE HOUSE. ”





“
**EVERYONE FROM
 TIMBER WINDOWS
 HAS BEEN A
 DELIGHT
 THROUGHOUT THE
 ENTIRE PROCESS.**”



“
 When we went to your showroom and saw
 the products, it made up our mind pretty quickly.”



A Glass *Act*





Winterbourne entrance door finished in a colour complementary to Farrow & Ball 'Card Room Green' with Etched Star glass and manufactured in Engineered European Redwood. The door also features a black Cottage handle, Doctors knocker and Blacksmith Traditional letterbox.

As a former chapel, built in 1841 and converted for residential use in the 1990s, the charming home of Mr & Mrs Sherwood sits within an Area of Outstanding Natural Beauty in Yorkshire.

“We had a fairly blank canvas to work with owing to the inappropriate white uPVC windows that were to be replaced and our home’s unconventional history” Mr Sherwood comments.

The owners chose a collection of flush casement windows finished in French Grey externally and White internally, with 18mm astragal bars.



Flush casement windows in 'French Grey' with 18mm astragal glazing bars, manufactured in Engineered European Redwood.

In addition, a striking Winterbourne front door was selected in a colour complementary to Farrow & Ball 'Card Room Green', coupled with black ironmongery.

“We made these choices to suit the history of the house and the stone finish.”

“VISITING THE HAREWOOD SHOWROOM WAS A PLEASANT EXPERIENCE AND WE ENJOYED MAKING OUR CHOICES.”

“WE BELIEVE IN DOING THINGS TO A HOUSE THAT ARE IN KEEPING WITH ITS HISTORY.”



GREAT *Outdoors*

One of our most popular door styles, the Bardwell is as adaptable as it is admired.

Equally at home as an unassuming utility room door, or as a statement-making front door, as used on this home.

By lowering the middle rail, the lower panel has become shorter and wider, thus distorting the proportions and giving an appearance of greater width. The addition of elegant glazing bars to the now expanded glazing area further accentuates this. Finally, the placement of the door knob and letter plate provide the finishing touches.

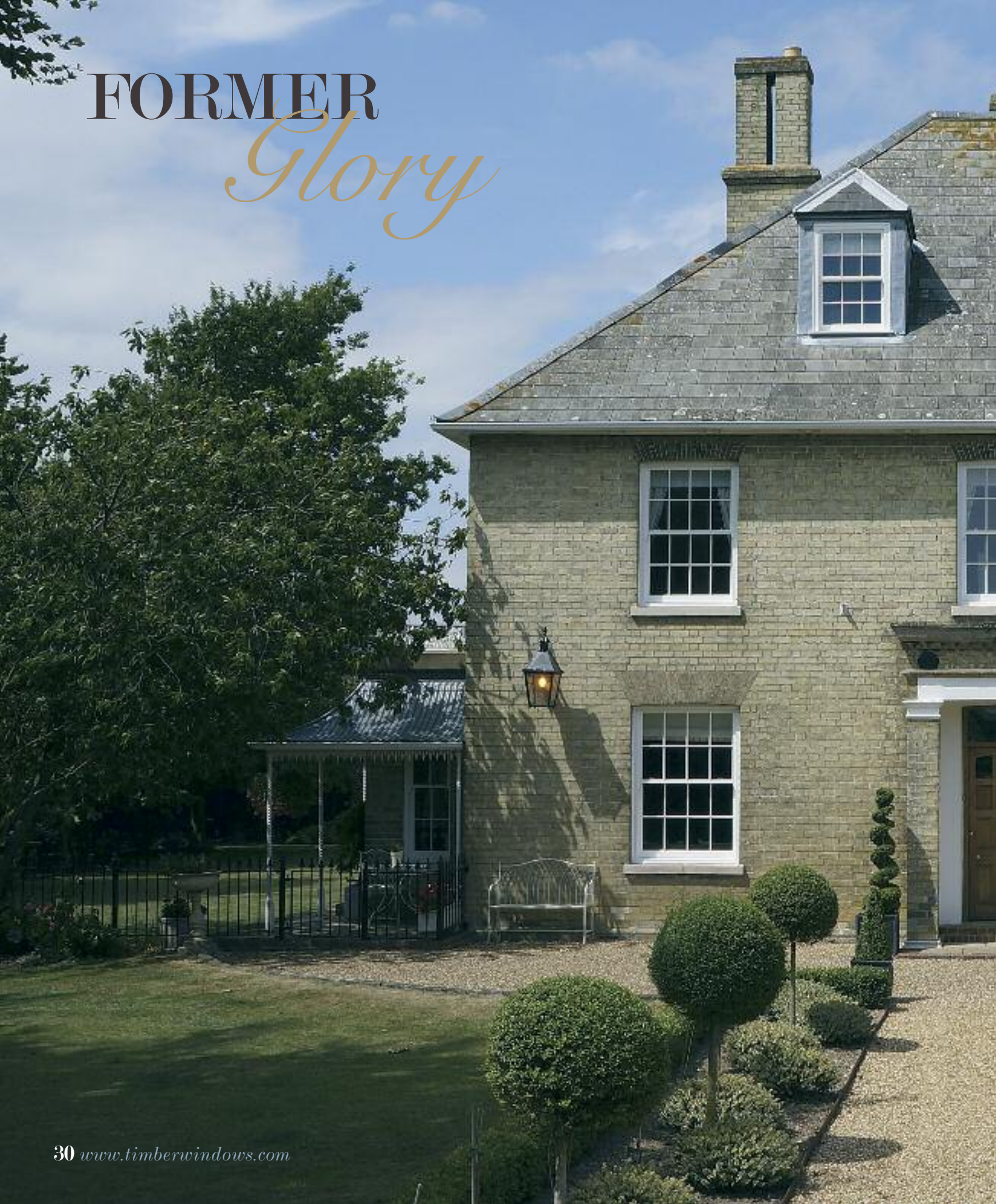
The new door made such an impact, that their neighbour in the terrace chose to have an identical design too!



Custom Bardwell door in 'Anodised Grey' featuring a Chrome Profile door knob, Medium sized letter plate and escutcheon from Samuel Heath. The door also features 18mm astragal glazing bars and 'Kathedraal' patterned glass to the door and toplight. Manufactured in Engineered Meranti Hardwood.



FORMER *Glory*





In this Hertfordshire farmhouse, the original wooden sash windows dating to 1863 had stood the test of time for some 125 years until being replaced with plastic alternatives in the 1990s; these however lasted only a little over 20 years before they began to fail and the current owners, thankfully decided to return their home's appearance to its former glory.

"We definitely wanted timber sash windows put back in; this is how the house was supposed to be!" Mrs Parker exclaims.

"Having travelled around the country a lot in the past few years, we'd seen a lot of houses of all sizes and styles but one thing we noticed was common to all of them was how the windows could make or break their appearance."



Before



"We'd never lived in a home that was draught free...until now!"



Box sash windows in slim and regular sizes, with both cords and weights, and hidden spring mechanisms manufactured in Engineered European Redwood with 18mm astragal glazing bars, brass ironmongery and finished in White.

The homeowners were convinced by what they saw at the showroom, *“we compared quotes and product offering with another company but we liked what we saw from Timber Windows, particularly superior were the bars and the finer details.”*

Simple yet elegant traditional sash windows with 18mm Georgian bars in a white painted finish adorn the Parker’s home now, with a combination of forms chosen; some using the cords and weights mechanism while others use our hidden spring system. New glazed French doors were also added to the sitting room.

“
As the house is supposed to be!
”

“We didn’t feel it appropriate to carry the full Georgian bars design through to the French doors so we were able to have a bar design manufactured that we had drawn up ourselves.”

Mrs Parker, and her visitors are suitably pleased with the outcome, *“the windows have made the rooms much lighter and they have nice details such as the cords and weights which add a nice touch of character. Everyone comments on the improvements to the appearance of the house.”*



French doors manufactured in Engineered European Redwood with bespoke glazing bar design, brass hardware and finished in White.

“ We have further plans for the house in the future, and will be back to Timber Windows when we carry out renovations and extensions on other parts of it. ”





DRAWN *to the* PAST

Having lived in his West Midlands terraced home for 3 decades and retired from a busy career in the past 2 years, Mr Cleary decided now was the time to do some work on the house.

"I'm putting the house back to how it should be, and I like the fact that I can do this, making it look as intended" he explains.

"The previous owner had put in uPVC windows that didn't look right."

Opting for a beautiful, solid Bevington design door in Mustang Green with Off-White frame, and polished brass ironmongery to transform the entrance, Mr Cleary was also sure to put authentic sash windows in upstairs, along with a casement bay window including multi-coloured stained glass; a feature of the local area.

Using nearby houses that still had original windows and doors, we were able to ensure that the designs and styles were both authentic and as close to correct as possible.

"I'm now really pleased with it, and it's achieved exactly what I was hoping for."

Flush casement windows and slim sash windows finished in 'Off-White' partnered with a Bevington entrance door finished in 'Mustang Green'. Manufactured in Engineered European Redwood.



Bevington entrance door and toplight finished in 'Mustang Green', with Small Polished Brass door knob along with Polished Brass Doctor's knocker and Medium sized letter plate from Samuel Heath. The toplight features the house number etched onto clear glass.

**Neighbouring properties
can provide a rich source
of information when restoring
a home.**



Bespoke flush casement windows finished in 'Off-White' with custom, signature glazing design to the fanlights. Manufactured in Engineered European Redwood.



"Having seen signs on local houses from other installations, and POSITIVE WORD OF MOUTH, I knew that the Harborne showroom was very good."

**"The fitters did an
EXCELLENT JOB, even
carrying
on during
a snow storm
to ensure
the bay
window
was speedily
secured in
place."**



COUNTRY *classic*



Before



“ We were IMPRESSED with the product guarantees, particularly those in respect of the paint life.”



Cottage casement windows finished in 'Cream' with 18mm astragal glazing bars, and manufactured in Engineered European Redwood.

"We'd been considering plastic and timber options for our new windows, but agreed with the instant verdict from Eddie of Timber Windows of Fornham, that the cottage warranted timber."

Mr & Mrs Smith comment about their country cottage near Bury St Edmunds; once two homes, now combined into a single dwelling.

“The windows are really lovely.”



“The windows are much more elegant now, than those that they replaced, particularly the glazing bars.”





“Our old windows were rotten through, painted shut, and beyond repair.”


“We considered repairing and restoring the old windows, but felt that it wasn't worth it and they would still require much more looking after.”

“They were painted shut and didn't open, so it seemed they were very much beyond saving.”

Opting for 'Cream' cottage casements with Aged Bronze Newbury design handles and pegstays, their appearance suits the style of the house, both inside and out, and complements the newly finished render.

Having lived in the house for three years, the owners have been tackling the house as a sympathetic modernisation, and are planning to replace more windows and doors throughout their home with Timber Windows products until the project is complete.

Cottage casement windows finished in 'Cream' with 18mm astragal glazing bars, Aged Bronze Newbury handle and matching pegstay. Manufactured in Engineered European Redwood.

A three-story red brick building with a bay window and arched doorways. The building features a mix of red brick and light-colored stone or concrete accents. The bay window is prominent on the second floor, and the ground floor has two arched doorways. The roof is dark grey with a decorative ridge. The foreground shows a garden with white and purple flowers.

*Slim sash windows
finished in
'Off-White' with
Polished Brass
hook fasteners.*

**SOMETIMES A JOB WELL
DONE, IS NOT BEING ABLE
TO EASILY TELL THAT WINDOWS
OR DOORS HAVE BEEN REPLACED,
THIS BEING OF PARTICULAR
IMPORTANCE IN
CONSERVATION AREAS.**

TRADITIONAL

touches

Before deciding to replace the windows, French doors and front door throughout her house, Mrs Sako investigated the option of having them repaired.

"I was surprised to learn from the quotes I received, that the costs to carry out repairs wasn't much different to having them completely replaced."

"I also had concerns about how poor the condition of the frames was, meaning replacing or repairing just the moving parts may have not solved anything" she explains.

Sitting in a conservation area, the home, in the city of Oxford had experienced structural movement over time, resulting in the homeowner having difficulty opening the windows. New, replacement windows could be fitted to take this into account and ensure their smooth operation.

A mixture of hidden spring and traditional cords & weights slim sash windows finished in 'Off-White' with Polished Brass hook fasteners, sash lifts and limit stops. Manufactured in Engineered European Redwood.

THE HAREWOOD GREY COLOURED DOOR STANDS OUT AGAINST THE CONTRASTING OFF-WHITE FRAME, WHICH IN TURN MATCHES THE SASH WINDOWS.



Westonbirt conservation entrance door with toplight, finished in 'Harewood Grey' with an 'Off-White' frame. Featuring Bevel Red decorative glazing on 'Kathedral' patterned glass and Antique Brass Unlacquered escutcheon, Doctor's knocker and Medium sized letter plate from Samuel Heath.

The benefit of a new, more efficient front door was also being able to return the set up to how it should have been; recessed into the archway rather than having an inner and outer door.

With greater thermal efficiency, smooth opening, improved security and enhanced protection from the noise of the busy street outside, Mrs Sako is satisfied that she made the right choice for her home.



**THE BEAUTIFUL
WESTONBIRT
DESIGN DOOR
CARRIES ALL**

**THE FEATURES OF A DOOR FROM
A CENTURY AGO, AND IN THIS
PARTICULAR SETTING, IS
ENHANCED FURTHER BY THE
ORNATE PLASTERWORK OF
THE ENTRY WAY.**





A photograph of a dark blue, arched door set in a light-colored stone wall. The door features a large glass window with a grid pattern. A small, scruffy dog is sitting on the stone step in front of the door. To the right of the door is a large, rounded green bush. The scene is framed by a semi-circular archway in the stone wall. In the upper right corner, there is a semi-transparent olive-green box containing the text 'Curve APPEAL'.

Curve
APPEAL

“THEY LOOK FANTASTIC!”

At just ten years old, the Hertfordshire home of Mr & Mrs Templeman was built in a traditional style, with the Templeman's taking ownership just four years ago.

The owners have set about making significant changes to tailor the property to their own way of life and style.

This project is not their first dealings with Timber Windows, *“at our previous house, we had quotes from both Timber Windows and another company, and ultimately went with the other company. In hindsight this turned out to be the wrong decision and we regretted not using Timber Windows. Since selling that house, the new owners are sadly having a nightmare with the windows we chose”* Mr Templeman explains.

The owners subsequently used Timber Windows for another property that they own and called us in to make changes to the doors on this residence.

The entrance way has undergone a complete makeover, featuring two sets of double doors. Both sets of doors are finished in colours complementary to Farrow & Ball 'Railings' externally and 'Strong White' internally, with fine 18mm astragal bars and Bronze finished Samuel Heath hardware.

Replacing a set of doors described as *“clunky patio style doors, that were unsightly and had poor sightlines”*, the owners were understandably glad to be rid of them, and emphatically state *“we are really very happy with the new doors!”*

Two sets of double doors including a bespoke, arched outer set. Finished in colours complementary to Farrow & Ball 'Railings' externally and 'Strong White' internally, with 18mm astragal glazing bars and Bronze Samuel Heath Shoulder handles. Internal doorset also features Satinovo patterned glass.



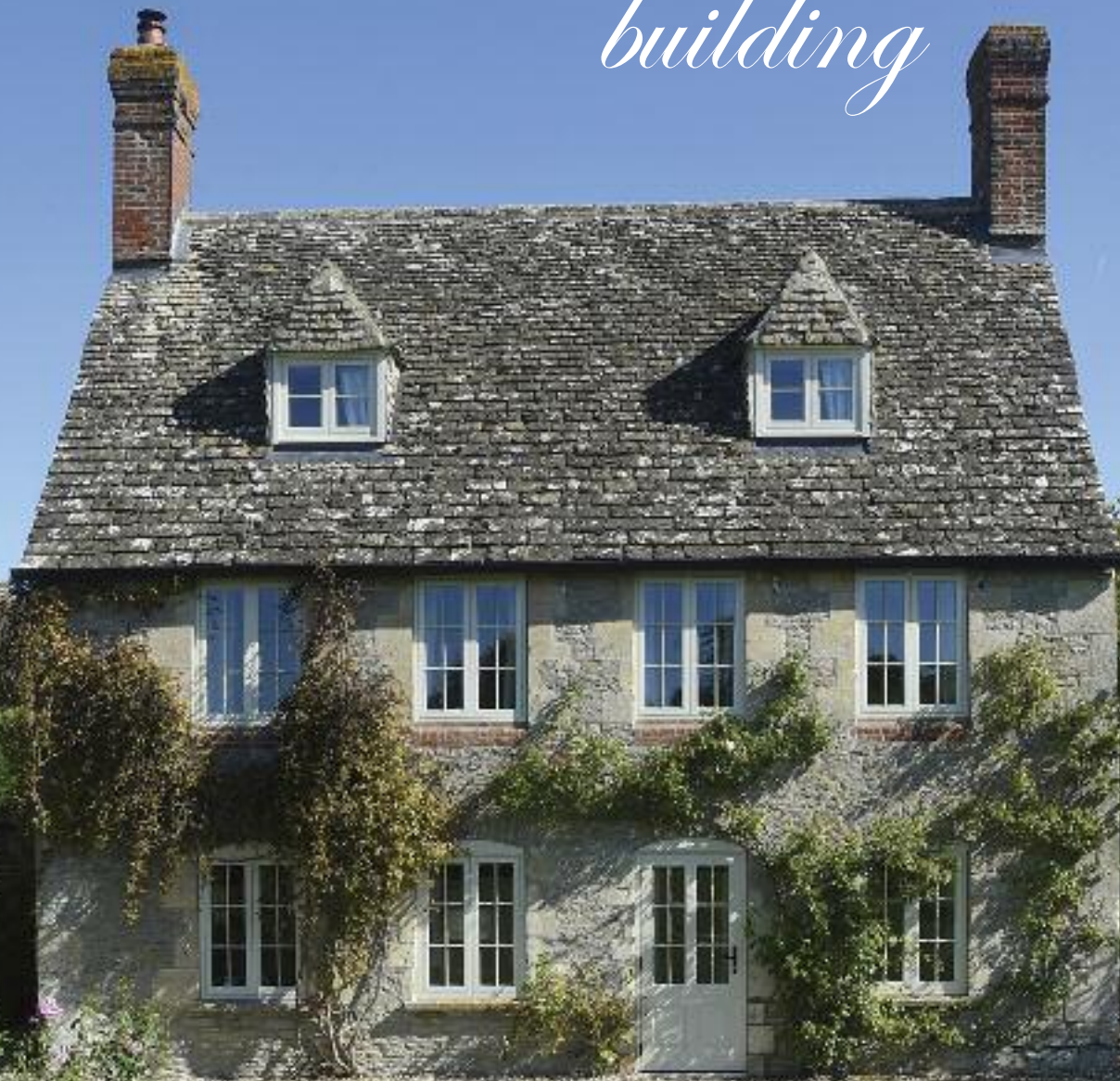
THE DARK BLUE/GREY SHADE IS THE IDEAL ACCOMPANIMENT TO THE SANDSTONE ARCHWAY.



“COMPARED TO BEFORE, THE DOORS NOW FEEL FAR MORE SECURE AND GIVE US MUCH GREATER PROTECTION FROM THE ELEMENTS.”



CHARACTER *building*



ALTHOUGH NOT
A FORMAL CONSERVATION
AREA, THE VILLAGE IS
GENERALLY TREATED AS
SUCH, AND EVERYONE
TAKES A GREAT DEAL OF
CARE TO RESPECT THIS.

N

ow sporting, beautifully designed cottage flush casement windows, this stunning cottage in a Wiltshire village has been given a traditional, new lease of life.

With the original part of the house dating to the 1690s, it was imperative that it was treated with respect. In the opinion of the homeowners, Mr & Mrs Ramage, the previous window design, with just a single horizontal bar, made the house look too 'gappy'.

Adding a simple formation of vertical and intersecting astragal bars has achieved the look befitting of their home.

Additionally, a single door now replaces a set of rather slim French doors, making for a much more usable entrance.

Throughout the property, all the items were chosen in the shade of 'Straw', a neutral yet distinct and calming colour.

Cottage casement windows and Kingston entrance door finished in 'Straw', manufactured in Engineered European Redwood.

“THE COLOUR IS GORGEOUS”



Kingston entrance door finished in 'Straw' with 18mm astragal glazing bars and a Black Cottage handle. Manufactured in Engineered European Redwood.

THE ADDITION OF A COTTAGE STYLE GLAZING BAR FORMATION HAS TRANSFORMED THE OVERALL APPEARANCE OF THE STRUCTURE.



"The door gets a lot of attention from passers-by!"





make an
ENTRANCE





make an ENTRANCE!

With styles derived from designs found in homes of character across the country, the Timber Windows collection of entrance doors adds individuality and style.

Choose from a range of ironmongery, including elegant period handles, traditional letter plates and knockers from our Samuel Health collection.

A selection of decorative glass options, based on authentic Victorian stained glass motifs, have also been uniquely commissioned for the range.

THE DECO PROVIDES
FAITHFUL DETAILING
WHICH REPLICATES THE
PROPERTY'S ORIGINAL
TIMBER WINDOWS.

*Deco casement
windows, all finished
in White with 18mm
glazing bars to
upper areas.*

DECO *perfection*

T

his 1902 detached house stands proud in the sought-after Long Ditton, Surrey close to the River Thames, Hampton Court Palace and Sandown Park racecourse.

The homeowner selected the Deco casement window for the substantial and challenging makeover of their home.

The Deco style features specially designed sections added to the front face of the window which allow the opening sashes to appear recessed within the frame. This important detail is common to properties of this period and was employed to provide a degree of modelling to the façade of urban homes.

Homeowner and part time project manager, Mrs Voysey, says *“it was equally important to us that we retained the aesthetic quality in every detail. The windows are large and if the detailing is wrong it could have had a disastrous impact.”*

The benefit of high-performance double glazing has added a new dimension to the family home overcoming heat loss, eliminating troublesome and unattractive condensation, and the need for unsightly secondary glazing. Situated on a residential road and in partial view of the main line rail serving the busy commuter link to Charing Cross, London, the new Deco casements have helped to reduce noise levels from entering the home.

For total privacy, attractive Etched Star glass was chosen for the large bathroom window.

Their local showroom provided expert guidance throughout the purchase and installation process, *“the service was excellent from start to end and we were grateful for the technical support and advice we received,”* continues Mrs Voysey. *“It took some time to agree the final order but that’s because we asked for additional and bespoke work by Timber Windows.”*

“BEING IN A CONSERVATION AREA THE DETAIL WAS AN IMPORTANT CONSIDERATION.”



Fensmark contemporary door with sidelights, manufactured in Engineered European Oak and finished in a 'Light Oak' stain, featuring a 316 coastal grade stainless steel Guardsman handle, escutcheon and letterbox.

“ WE WERE VERY IMPRESSED BY THE FITTING QUALITY. ”



Previously built to a mock-Georgian style, the home of Mr & Mrs Redman was built in 1990 with the current owners having occupied it for 18 years.

"We decided to make some changes to the house, and the previous style hadn't aged too well - we wanted a cleaner, more contemporary style"

An imposing and impactful Light Oak stain finished entrance door with sidelights is the centerpiece, while 'Cream' finished flush casements were added throughout.

Commenting on the outcome, "We're extremely happy with the work that was carried out and the improvements to the appearance of the house."

"WE WILL DEFINITELY RETURN TO TIMBER WINDOWS FOR FURTHER PRODUCTS WHEN WE CARRY OUT OUR PLANNED BUILDING WORK AT THE REAR."



Contemporary flush casement windows, finished in 'Cream', featuring 316 coastal grade stainless steel window fastener and manufactured in Engineered European Redwood.





“We were never put under any pressure at the showroom, and were given time to make decisions.”



COUNTRY *Style*

Having now retired, Mr & Mrs Viner decided to carry out a range of improvements to the Berkshire cottage they've called home since the 1990s.

With some parts of the cottage dating to the 1700s, the couple describe the issues previously experienced, *"the old windows were in very poor condition, and required a lot of upkeep – the cost of repairing and repainting was no longer the most economical option, and they weren't helping on the heat retention front either."*

Elegant flush casement windows in a 'Smoke Cream' finish with 27mm horizontal astragal bars were selected to retain the correct appearance.

“It’s a simple pleasure to be able to open windows without them getting stuck”

“We’re very pleased that the new windows are so traditional looking, and in keeping with the house.”

In summary, Mr & Mrs Viner comment on the overall improvement, “we’ve noticed a massive difference in how much better the house feels in all weathers, and we’ve found that our energy use has dropped as a result too.”



Flush casement windows featuring 27mm astragal glazing bars, finished in 'Smoke Cream' with Aged Bronze Reeded handles, and manufactured in Engineered European Redwood.





Georgian HERITAGE

This spectacular 1850's Georgian house with Victorian modifications in the suburbs of Birmingham had a series of very special requirements for its windows and doors. Its preservation as a house of period importance attracts the watchful eye of English Heritage, who preside over any present-day changes.

The staff at Timber Windows of Harborne were instrumental in liaising with both Mr & Mrs Blacklaw (the owners) and English Heritage in order to agree the replacements and the very particular specifications of them.

"This was a big project involving architects as well as the other interested parties, but we specified the window company"
Mr Blacklaw says.

**A VAST SELECTION OF STYLES
AND TYPES OF WINDOWS WERE
REQUIRED, ALL TAILORED TO
THE SPECIFIC ARCHITECTURAL
PERIODS OF THE PROPERTY.**



“HAVING USED TIMBER WINDOWS OF HARBORNE BEFORE, WE WERE VERY HAPPY WITH THEIR WORK AND KNEW THEY HAD THE EXPERTISE TO HELP US WITH THIS HOUSE.”

The nature and scale of the house and its various periods of architecture, meant that all kinds of Engineered Meranti Hardwood sash windows were required including hidden spring, slim box variations, chains & weights mechanisms and Venetian (triple) design sashes, along with a number of bespoke requirements.

In addition, a large set of French doors with toplights were specified and a Belbroughton entrance door. The stained glass design in the door and bathroom windows were matched by Timber Windows to an original design found elsewhere in the house.

Mr Blacklaw concludes, “it’s been a long project but we’re very happy to now be living in the house.”

THE STRIKING STAINED GLASS DESIGN WAS MATCHED BY TIMBER WINDOWS TO AN ORIGINAL CREATION FOUND ELSEWHERE IN THE HOUSE.



Belbroughton entrance door in White with bespoke, historically matched stained glass design and Samuel Heath Profile Shoulder handles in Polished Brass.



Engineered Meranti Hardwood sash windows in White with brass ironmongery and various formations, including bespoke specifications and 18mm astragal glazing bars throughout.



Bardwell French doors with oversized toplight design in White, Polished Brass Chatsworth handles and 18mm astragal glazing bars.

BLEND

right in...

"Our lovely new windows have really contributed to making the house look a lot fresher now, along with some wider redecoration works" Mr & Mrs Mascall comment of their North London home.

The homeowners opted for sash windows in a classic 'White' finish featuring 18mm astragal bars, in a formation known as 'Tombstone' – an original design common to the area.

"Lots of houses nearby have removed the Tombstone style, which is a shame and it was something we were very keen to retain."



"The style is an exact replica of what we had before, but a renewed version, however the comfort indoors has been very noticeable – as the seasons change, the temperature control has been greatly improved – the house retains heat and regulates the sun much better."

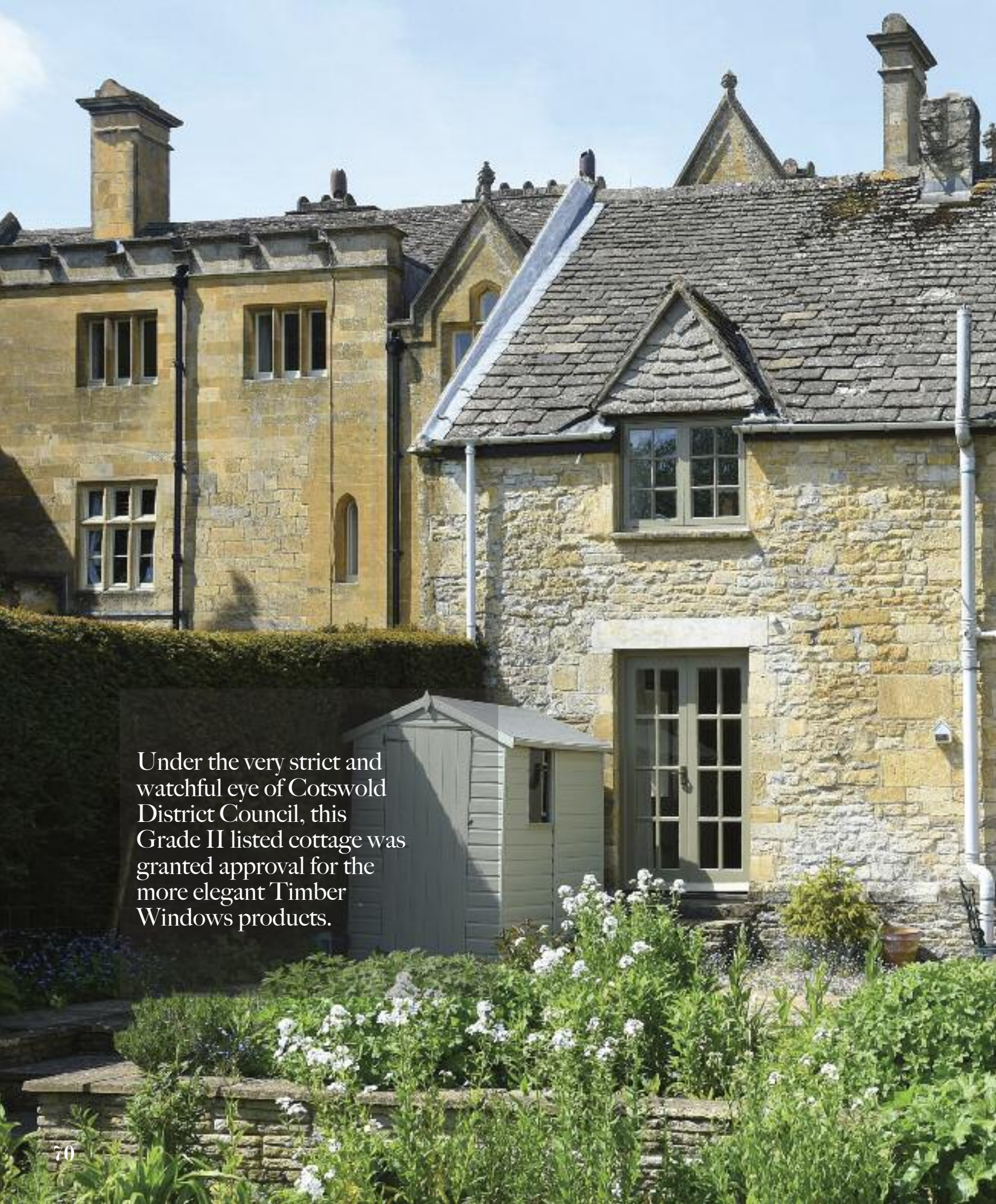
Speaking of the overall experience, Mr & Mrs Mascall say, *"we've been very happy with everything Timber Windows has done for us".*



**"OUR HOUSE IS
LOOKING LOVELY."**

Slim sash windows with a Tombstone design and 18mm astragal glazing bars to upper sash, finished in 'White' and manufactured in Engineered European Redwood.

**"THE SEASONAL TEMPERATURE
CONTROL HAS BEEN GREATLY
IMPROVED."**



Under the very strict and watchful eye of Cotswold District Council, this Grade II listed cottage was granted approval for the more elegant Timber Windows products.



TRUE

Craftsmanship

The Brockhampton Park Estate is steeped in history, built in the mid 1600s and heavily protected with a Grade II listing.

In the late 1800s the estate underwent expansion, adding extra buildings such as a carriage house and a game house, with all of these extra buildings eventually becoming residences in the 1990s.

One of the portions of the game house within the Gloucestershire manor is now the home of Mr & Mrs Brassington.



Under the very watchful eye of Cotswold District Council, the Brassingtons opted to improve their Grade II listed cottage (based on its curtilage to the main house). Such is the level of guardianship over the estate, any application was initially refused until the homeowners were able to demonstrate that a more elegant solution was available from the Timber Windows range when compared to the existing, 1990s-installed windows, resulting in approval of the application.

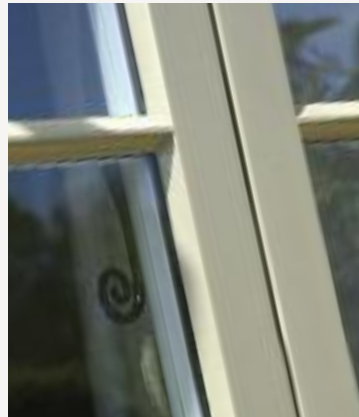
The fine, true bars and putty finish against the ultra-slim double-glazed unit in our product is a much slimmer solution in comparison to those already installed.



“We’re VERY HAPPY to be preserving the property. In areas without restrictions, structures tend to get ruined.”

Cottage flush casement windows in the shade of 'Oxide Gold' externally and 'Off-White' internally with 22mm true bars, putty glazed and 14mm ultra slim double glazed units.

“The putty work is amazing,
EXTRAORDINARILY GOOD.”



“The windows
are LOVELY...”

...The craftsmanship and quality are
excellent; the fitting was also carried
out exceptionally well.”

*Black Monkeytail
handles and pegstays
feature throughout all
windows.*



A photograph of a stone building with a white door and a large window, surrounded by green grass and blue flowers. The building is constructed of rough-hewn stone blocks. A white door with a black handle and a small window is set within a white frame. To the right of the door is a large, multi-paned window. The scene is set in a garden with tall green grass and clusters of blue flowers in the foreground. A black downspout is visible on the left side of the building.

“We’ve lived with some of the windows and doors for 5 years and they still look and work lovely”



AS GOOD TODAY

Mr & Mrs Pinder live in their historic home just outside of Harrogate, North Yorkshire; a property with a fascinating past. Starting life as 2 cottages and an undertaker's workshop, they were built in the local red sandstone during the 17th Century. It remained as two separate properties until the late 1950's when a wealthy mill owner bought and converted them to a very high standard, into a single home. A year later when the property was nearing completion, the mill owner's wife decided that it was just too far from the city of Leeds and consequently they never moved into the converted property.

"The house is south west facing and is very exposed to the elements. Over the years preceding the replacements, some of the windows were showing signs of wear and tear, and were constantly needing repairs and painting; they were rotting and were draughty" explains Mrs Pinder.

Throughout the property, a substantial number of flush casement windows, arched windows and those with gothic astragal bars, along with a new front door were installed, with the following second phase consisting of ten sash windows. All have been finished in a colour complementary to Farrow & Ball 'Fawn' externally with various other colour matches used internally to suit the décor of the individual rooms.



"We felt confident in the ability of Timber Windows to deliver a first class installation."

The homeowners were originally recommended to visit their local showroom, and they have since suggested several of their own friends do the same, *"A friend recommended we look at Timber Windows at Harewood; we are glad that we did because they had the right products and we felt confident in the company's ability to deliver a first class installation."*

"The windows and doors are all fantastic – we're delighted with them. We've lived with some of them for 5 years and they still look and work lovely. The front of the house is on a fairly busy through road, and the noise has been reduced greatly by the windows."

Hidden Spring sash windows in Engineered Meranti Hardwood painted in a colour complementary to Farrow & Ball 'Fawn' externally and various shades internally.





Chadlington front door with black accessories. Flush casement windows with 18mm astragal glazing bars, some in a gothic arched style. All manufactured in Engineered Meranti Hardwood, finished externally in a colour complementary to Farrow & Ball 'Fawn' with various colour matches internally.

IT'S ALL SUSTAINABLE, SO DOESN'T HARM THE EARTH

We offer Forest Stewardship Council® (FSC®) certification (FSC - C124392) European Redwood for your timber windows and doors.

We are also able to offer options of Meranti Hardwood and European Oak from sustainable sources.

Over 80% of Timber Windows customers choose European Redwood – our favoured alternative. The longevity of this strong, knot free, stable timber is well proven in the United Kingdom.

European Redwood is the timber used by the British joiners of yesteryear – most

100 year old British joinery was originally made using European Redwood.

All of our Redwood derives from sustainably managed plantations in Northern Europe, which means that when trees are felled, new ones are always planted to replace those harvested.

In fact European forest areas are now expanding by around 5000 sq. km each year. These forests are also healthier for the environment, removing Co2 from the atmosphere and storing it in their trunks.

So when you choose your new Timber Windows you will not harm the Earth.

ENGINEERED TIMBER TRADITIONAL WOOD

Making the right choice

Traditional wood is both beautiful and tactile. For many centuries it has been the material of choice for windows and doors throughout Britain and Europe. But traditional wood has innate problems - a natural tendency to expand and contract, and when wet, to warp in the direction of the grain resulting in windows and doors that twist and stick, causing frustration for homeowners.



As wet wood has a tendency to warp in the direction of the grain, layering the wood in this way ensures that any movement caused by the absorption of moisture is evened out. So engineered timber is stronger, longer lasting and resistant to the issues that affect traditional wood. Windows and doors made with engineered timber retain their strength and structure, ensuring that they remain a perfect fit, just as they did on the day they were installed.

Engineered, or multilayer timber, is an innovative solution that counteracts these issues. It is created by layering wood sections, with the grain of one section of wood layered in the opposing direction to the grain of its neighbour.

Using engineered timber ensures that there is no warping or twisting, sticking or rubbing, no matter how damp the prevailing atmospheric conditions. This makes it the perfect choice for every area of the UK - no matter how exposed the location.

Finished by hand

Engineered timber is also far easier to work with. It can be used to meet the design specifications of complex windows and doors much more efficiently than solid wood, yet retaining all of its natural appeal. And whilst state of the art computer controlled machinery inevitably plays its part, all of our engineered timber windows and doors are hand finished before being subjected to rigorous quality control, with every aspect of the construction and glazing fully checked and re-checked.

So put us to the test - visit one of our Timber Windows showrooms and see for yourself how timber has changed.



10 REASONS TO CHOOSE TIMBER WINDOWS

1 Factory applied micro-porous coatings providing maximum protection but minimal maintenance

All of our windows and doors are factory painted prior to assembly, providing complete protection from moisture absorption and maximising longevity. Every product receives a base coat of timber preservative, then a primer coat, followed by two coats of micro-porous paint. You should expect our coatings to last from five to eight years without the need for re-treatment. Should you wish to change the colour of your windows then redecoration is a very simple task as there is no sanding down required. An average window should take about thirty minutes to re-decorate.

2 Internal beads for security

Glass is fitted from room side to prohibit would-be intruders from gaining entry by removing the glass.

3 Neat, coloured silicone seals

Purpose-made grooves on the inside and outside of the window receive the silicone necessary to protect against water ingress. Appropriate coloured or clear silicone is factory applied, guaranteeing a perfect, unobtrusive seal.

4 Ventilation channels help prevent double-glazing from misting

Ventilation channels protect against the failure of double glazed units. In standard systems misting can occur when glazing units are allowed to sit in water trapped within the frame.

5 Multi-layer timber sections with opposing grains, balances warping and combats twisting

The use of multi-layer timber for windows and doors is long established in Scandinavia and Northern Europe, but very rare in Britain. The multi-layer structure used as standard throughout our range is particularly effective in resisting warping and twisting, as the opposing grains even out natural moisture movement. It is the twisting of timber during wet weather, more than the swelling itself, which causes standard wooden windows and doors to stick.

6 Glazing units almost twice as effective as ordinary double glazing

All of our windows and doors incorporate double-glazed units with enhanced thermally insulating glass, providing an extremely low U-value. We further improve the efficiency of the unit by filling the cavity with argon gas and using low conductivity spacer bars to minimise edge losses. The result is a 1.1 W/m²K centre pane U-value. This means an 80% increase in energy savings compared to single glazing, and a 45% increase in energy savings compared to ordinary double-glazing.

7 Exceptional optical clarity

Advanced glass technology not only provides enhanced thermal performance but also much improved clarity, particularly compared to traditional hard coated low e glasses. High light transmittance (77%) maximises the entry of natural light into the home.

8 Warm edge spacer bars

Low conductivity spacer bars help to minimise heat loss and combat condensation levels on the inner pane.

9 Rebated glazing beads eliminate unsightly gaps between the frame and bead

In standard timber systems, paint is prone to cracking at the point where the bead meets the window frame. By rebating the glazing bead over the sash we conceal the joint, which eliminates the problem.

10 Security

All Timber Windows are fitted with advanced security locks that wrap around the openers on our Flush Casements and engage bolts in multiple points on our Lipped Casements. Doors are fitted with multi-point locking mechanisms, featuring hook-bolts and deadlock.



Nature's HUE



Kingston entrance door, stable door and cottage flush casements finished in 'Tent Grey', manufactured in Engineered European Redwood.



The traditional Kingston door and sidelights are designed with form and balance in mind. A matching trio of pewter knocker, handle and letterplate is joined by etched star glazing for the perfect finishing touches.

“ **Completely on schedule, the windows and doors were installed easily and with minimal disruption** ”

Situated in a private development, this modern build home enjoys a peaceful location on the edge of a picturesque Gloucestershire village.

The owners, Mr & Mrs Boyens embarked on a refurbishment project, shortly after purchasing the property, to make it their own.



French doors with sidelights finished externally in 'Tent Grey' featuring 18mm astragal glazing bars and Pewter Avon handle. Manufactured in Engineered European Redwood.



“**The stable door is both enjoyable to use and a practical addition to the laundry room.**”

Twenty-year-old, poorly designed white and brown uPVC windows and doors were given the boot, in favour of cottage style engineered European Redwood windows and doors, finished in Tent Grey with horizontal astragal bars.

More major changes included removing a stone pillar in the lounge to incorporate a set of French doors in place of two single doors, “the French doors do a lovely job of opening up the sitting area and increasing the overall feeling of light in the house.”

“We're thrilled - it's made such a difference to the look of the whole house!”

With its golden, sandy Cotswold stone walls, the earthy tone of the Tent Grey windows and doors are the perfect accompaniment.



Kingston entrance door with sidelights, finished in 'Tent Grey', featuring a Pewter Shakespeare knocker, letter plate and Avon handle, along with Etched Star glass. Accompanying cottage flush casement windows in matching colour finish.

First IMPRESSIONS

“Noise reduction has been a MASSIVE improvement.”



Considering this four storey 1830's Bristol townhouse sits in a conservation area, it is perhaps surprising that until recently it was decked out with a selection of poorly suited uPVC and aluminium windows; "I'm not sure how that was ever allowed", homeowner Mrs Ward says.

Having owned the property since 2013, the owners have been working tirelessly to renovate the house, including replacing all the windows and doors across three phases, beginning in 2016.

Sash windows, including those with swept heads, finished in a classic 'White', were installed throughout, along with a striking new front door and basement door, both in a colour complementary to Fired Earth 'Nordic Light' with 'White' frames.



A mixture of traditional and swept head slim sash windows finished in White, with decorative sash horns and manufactured in Engineered European Redwood.





“ The windows are lovely, we’ve been very happy! ”

"We chose different options to suit different parts of the house, varying specifications and ironmongery finishes."

Owing to its proportions, the main entrance door gives a real sense of grandeur, with the design elements carefully considered, *"Phil from the Clifton showroom was excellent in his design advice to ensure they were in keeping with the property; correcting previous design mistakes."*

"We've been very happy throughout - the windows installed four years ago, still look just as good as those installed this year."



Bardwell entrance door with arched toplight, finished in a colour complementary to Fired Earth 'Nordic Light' and a 'White' frame. The door features 'Canterbury' patterned glass, 18mm astragal glazing bars and a traditional Pewter Blacksmith letter plate. Door handle sourced separately by the customer.



"The team were very flexible and patient throughout, giving us time and advice to aid our decisions – there was no pushy sales tactics."

Moorbank conservation entrance door with toplight, finished in a colour complementary to Fired Earth 'Nordic Light' and a 'White' frame. The door features Etched Sun patterned glass, a bespoke 18mm astragal glazing bar formation and ironmongery sourced separately by the customer.





“We wanted our replacement doors to look and feel correct in the building, and area we live in”

HOME *Front*

“We decided to smarten up the front of the house, and replace a poorly fitted front door that didn’t even lock properly” explain Mr & Mrs Dunnett of their Suffolk town based home.

“Knowing that Timber Windows had carried out many replacement projects in the surrounding area, of the same type and property age gave us confidence in our choice.”

The homeowners opted for two doors as the external and internal doors for their porch. Both doors were finished in ‘Tent Grey’ and carry a number of beautiful details including traditional bolection moulding, an etched glass design and etched house number, and Antique Brass Unlacquered ironmongery.

Explaining their pleasure with the result, Mr & Mrs Dunnett say, *“our reaction as always was just pure joy at the finished project, both the doors looked exactly as we had envisaged.”*

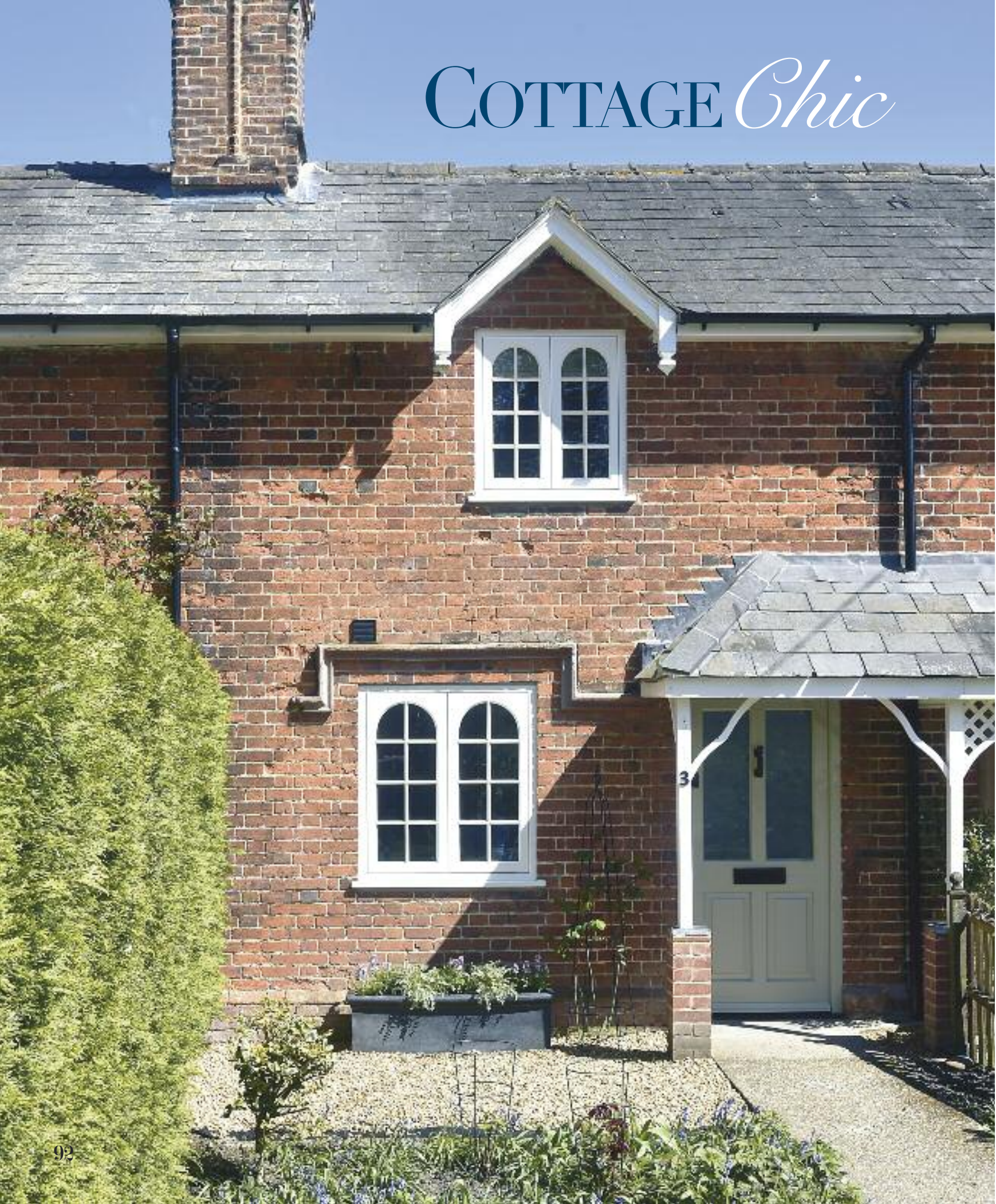
“Everyone involved in the whole process were excellent – even the attention to detail in selecting the right colour and door furniture, was just brilliant.”



Externally, a Kingston entrance door is finished in ‘Tent Grey’ and features a true arch toplight with sandblasted glass, and etched house number. This door has Empress etched glass, bolection moulding and a Ring knocker, Medium sized letter plate and Extended Contour handle in Antique Brass Unlacquered from Samuel Heath. Internally, a Bardwell door has 18mm astragal glazing bars with clear glass.

“The whole team would receive five stars on any review”

COTTAGE *Chic*



In a quaint Suffolk village, Mr & Mrs Bartlett took on their 1860's farm worker's cottage, just one year ago, breathing new life into a home that had become dilapidated.

Replicating the style of the windows from before and the design common to the terrace, the main design choice to make was for the new door, ***"we spent ages thinking about the design, style, colour and ironmongery - we love our new door"*** the couple exclaim.



Kingston entrance door finished in 'French Grey', with a Blacksmith Traditional Letterbox, Doctors Knocker and escutcheon in Black, also featuring Etched Star glass and manufactured in Engineered European Redwood.

The new door is a Kingston design, finished in French Grey with black ironmongery, while the flush casement windows feature true arch swept heads and are finished in Off White.

"We've had lots of trades people in the house, and our new windows and door have attracted much attention and recognition of their quality."



Cottage flush casements in OffWhite with 18mm astragal glazing bars, Black Peardrop handles and pegstays, and true arch swept heads.

"WE CAN REALLY TELL THE DIFFERENCE; THE PRODUCTS FEEL SO SOLID."

"WE'RE INCREDIBLY HAPPY!"

TAKING *Root*

*Cottage casement windows,
Flush casement windows
and French doors with Black
Cottage handle, finished in
'Straw' and manufactured
in Engineered Meranti
hardwood.*





“CHOOSING OUR
WINDOWS AND
DOORS FROM
TIMBER WINDOWS
HAS TURNED OUT
TO BE THE BEST
THING WE DID IN
THE HOUSE”



“ THE SHOWROOM TEAM WERE VERY HELPFUL THROUGHOUT THE WHOLE PROCESS ”



On former farmland, with nothing but open views all round, Mr & Mrs Spence have created their dream home.

Built from scratch to their own specification, alongside our beautiful timber windows and doors, the owners commissioned an oak frame from specialist manufacturer, Border Oak and an exquisitely crafted kitchen from Neptune.

Featuring flush casements, French doors and an entrance door in the calming shade of 'Straw', the products achieve a traditional appearance for a new home.



“ WE ARE DELIGHTED WITH THE PRODUCT. ”

“I was absolutely set on the style and type of window for the house, and sought to find them independently of our building contractor – a chance shopping trip meant we walked past the Timber Windows showroom, and I knew these were the products I'd been looking for”

Mrs Spence explains.

Cottage casement window finished in 'Straw', featuring Satin Chrome Peardrop handles and matching pegstays.

“We exceeded our estimated allocation for the window budget, and we made changes in other areas to accommodate it, but it was absolutely worth it.”



Cottage casement windows and Belbroughton entrance door finished in 'Straw', featuring 18mm horizontal astragal glazing bars, manufactured in Engineered Meranti hardwood.

HIGH *Standards*

Cottage flush casement windows, French doors, stable doors and single door in Light Ivory externally and White internally with 18mm horizontal astragal bars and gothic bar design to single door. All items manufactured in Engineered European Redwood and complemented by black ironmongery.





**“THE SHOWROOM
GAVE US THE
CONFIDENCE WE’D
FOUND A COMPANY
THAT COULD
MEET ALL OUR
REQUIREMENTS.”**



This beautiful home in the West Midlands village of Hampton-in-Arden, formerly stood as three small cottages, until it was combined and sympathetically refurbished to serve as a single four-bedroom property.

Mr & Mrs Houston were very diligent in their search for the right windows and doors, and had specific requirements, "the windows had to be traditional cottage style, have a good choice of colour options, as well as being able to specify dual colour and have a design appearance that would enhance the house."

“
WE ARE DELIGHTED WITH THE
HIGH STANDARD OF THE INSTALLATION.
”



Cottage flush casements including bay windows, French doors, a stable door and a single rear entrance door were all specified to be made in Engineered European Redwood, finished in Light Ivory externally and White internally with black ironmongery and 18mm horizontal glazing bars.



Our Cottage flush casement windows feature the same elegance as the conventional flush casements, but through the use of slimmer timber sections for the frame and sashes, and a clever design construction that negates the need for vertical mullions, the cottage casement has an even sharper appearance and allows approximately ten percent more light in too.

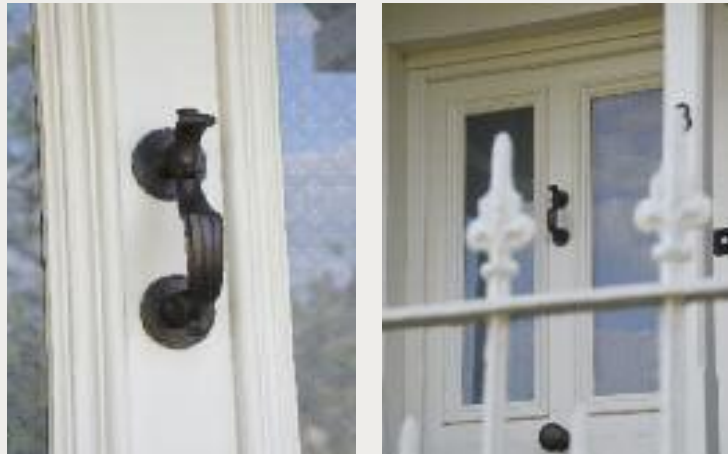
Paying a visit to Timber Windows of Harborne having received an invitation to a special open weekend event, the homeowners were impressed with what they found at the showroom, "this visit gave us the confidence we'd found a company that could meet all of our requirements as well as create a bespoke door design to match the original we were replacing."



The new windows and doors are a flawless fit with the style of the property, and are very much to the liking of Mr & Mrs Houston too, "We are delighted with the high standard of the installation work and with the products because they have met all of our requirements in full."



Something old something new



Westonbirt conservation entrance door finished in 'Straw' featuring Bronze Profile handle, escutcheon and Doctor's Heath with Etched Star glass. Manufactured in Engineered European Redwood

The front door was selected with heritage in mind; everything from the bolection mould details to the bronze finished ironmongery give the perfectly authentic aesthetic.



8

Home to the Oakley family, this late 1700s Oxfordshire farmhouse has undergone a substantial overhaul.

Purchased from the original farming family three years ago, the Oakley's set about making this outstanding home, suitable for modern living.

"The house has been gutted throughout, and the doors were the main items that needed attention due to their poor condition."

Replacing like-for-like where older examples existed, the homeowners have ensured that their new doors, give the right flavour of the past while functioning to today's standards.

Chosen carefully to coordinate with original sash windows, all the items are finished in the shade of 'Straw' with appropriate hardware for that period, authentic feel.



“**The old French doors had to go, they were uPVC, flimsy and simply not in keeping with the house.**”

French doors with sidelights and bespoke, arched toplight, finished in 'Straw' with a Black Cottage handle, manufactured in Engineered European Redwood.

Reassuringly solid, not only do our beautiful doors look the part, they also offer outstanding security and peace of mind.



Moorbank conservation entrance door finished in 'Straw' with a Black Cottage handle, manufactured in Engineered European Redwood.





Traditional slim sash window with 18mm astragal bars, in a colour complementary to Farrow & Ball 'White Tie' with Mottled Antique Brass ironmongery and manufactured in Engineered Meranti Hardwood.

BRIGHT

Outlook

Situated in an Area of Outstanding Natural Beauty in rural Somerset, this former mill and manor house with origins back to the year 982, owned by Mr & Mrs Lloyd has received a sympathetic update. *"The windows were replaced 14 years ago but the builders and architects specified windows of an inadequate quality that had already rotted!"* Mrs Lloyd comments.

When searching for new windows and doors, Mr & Mrs Lloyd took the time to consider different companies to ensure they bought the right products for their property. *"We felt our choice was quite restricted, either a joiner or uPVC products. However, when we visited the Timber Windows showroom in Clifton, we only had to spend 5 minutes with the team to know we didn't have to look any further!"* Mrs Lloyd explains.

The Timber Windows team was on hand to help Mr & Mrs Lloyd with their project, choosing tall windows that maximise the views of the land and wildlife from the house in its beautiful surroundings.



French door sets, slim sash windows and flush casement windows, all with 18mm astragal glazing bars and finished in a colour complementary to Farrow & Ball 'White Tie'.





*“The fitting teams have
been excellent throughout.”*





The house now features slim sash windows, flush casement windows, entrance doors and French doors, all finished in a colour complementary to Farrow & Ball 'White Tie'. *"We love the ironmongery. We wanted an Antique Brass look and the choice available from other companies was very poor!"* Mrs Lloyd goes on to comment.

So pleased and impressed with their experience, Mr & Mrs Lloyd returned to Timber Windows a couple of years after their initial installation to replace their ailing garden room with products matching the rest of the house, *"testament to the quality of the new structure, the garden room is now much more useable, and no longer freezing cold or boiling hot."*

"Everyone from Timber Windows has been a delight throughout the entire process! We are really very pleased with the quality, fitting and the service we received. We have been singing the praises of them to everyone".



French door sets and flush casement windows, all with 18mm astragal glazing bars and finished in a colour complementary to Farrow & Ball 'White Tie'.

“Having spent so long looking at rubbish products, once I tried a sash window from Timber Windows, I was sold straight away. They were FANTASTIC”

French doors with 18mm astragal glazing bars, in a colour complementary to Farrow & Ball 'White Tie' and an Antique Brass Unlacquered Extended Profile handle from Samuel Heath.



Bardwell entrance door and accompanying flush casement window with 18mm astragal glazing bars, in a colour complementary to Farrow & Ball 'White Tie' and an Antique Brass Unlacquered Extended Profile handle from Samuel Heath.



“The whole installation process took 4 weeks which was faster than

we were expecting. All of the original panelling was carefully removed and reinstated. The house never felt exposed and it was always sealed and secured!” Mrs Lloyd explains



THE ART OF RESTORATION



The building's origins are as an orangery to a manor house that once stood nearby, providing a bright environment to cultivate produce for use on the estate. Much later, the structure was used as a chicken shed!

About 15 years ago I visited some friends in Leeds – they had just moved into a three storey terraced house within walking distance of Headingley cricket ground. The area was deeply unpopular in those days, but they could see the potential in both the house and the area.

Careful research had unearthed original images of the property – giving them vital information on the design of the original front door and sash windows. Once the horrible plastic versions were replaced, the true appearance of the house was revealed – and after a year or so of hard work they made a tidy but modest profit on their now beautiful home.

Like Headingley, many towns and cities in the UK can readily point to a ‘conservation area’ – one where individual streets and sometimes just small areas are restored to their former glories. And with soaring property prices, the incentive to improve rather than move, becomes that much stronger.

Today many people visiting our showrooms are looking to replicate the look and feel of the original doors and windows – but with the benefits of modern timber performance and insulation, combined with high levels of security. The expanding network of Timber Windows showrooms can provide professional advice and knowledge – they will be familiar with the history of the area and the designs that will work best for your home.







MAKE A HOUSE A HOME!



Slim sash windows with traditional chains & weights, finished in 'French Grey' with Gothic Amber Glass in the bathroom and 18mm astragal glazing bars throughout.

“ We have had numerous people comment on how wonderful our house looks, and how in keeping the windows are. ”



Frenchay entrance door with toplight, finished in 'Harewood Grey' with a 'French Grey' frame. Featuring original encapsulated glass, Antique Brass Unlacquered escutcheon, Profile door knob and Medium sized letter plate from Samuel Heath.

“The response from neighbours and passers-by has been phenomenal” Mr & Mrs Fox-Partridge say, explaining the effect of their home’s transformation.

Their 1840’s late Georgian, early Victorian period home in Macclesfield, Cheshire has been treated to gorgeous, new, authentic sash windows and a spectacular new front door.

“We wanted to keep the integrity of the house and therefore using timber frames, and period features was our main priority – we hate uPVC.”

“Our lounge used to be unusable due to the cold and draughts from the window, but it is now transformed.”

Our slim sash windows are finished here in ‘French Grey’ externally and ‘Smoke Cream’ internally with brass ironmongery, and ‘Gothic Amber’ etched glass features in the bathroom.

Slim sash windows finished in ‘French Grey’ with 18mm astragal glazing bars and Frenchay front door, manufactured in Engineered Meranti Hardwood.



Alongside these, the front door is the Frenchay style in ‘Harewood Grey’ with a ‘French Grey’ frame and toplight, featuring Antique Brass Unlacquered ironmongery from Samuel Heath.

“Timber Windows listened to our wishes every step of the way, advising and collaborating with us.”

The original stained glass has been retained, and encapsulated within new glazing units, and the toplight is an exact replication of what it replaced, “the door brief was for pretty much the same as before, but better, and to keep the beautiful glass.”

“The outcome is utterly breathtaking and has returned the much-needed heart and soul to our home.”



Superb
SASHES

Replacing the sash windows, like-for-like in their 1950's home was one of the top priorities for the Collington family.

"The new sashes are an exact, authentic replication of what they replaced" Mr Collington explains.

"The other factors we were determined to ensure were right was the quality of the timber, and the reputation of the installation company."

Classic 'White' sash windows, some at over 1.8 metres tall, were specified along with fine 18mm astragal bars, while the Hidden Spring mechanism option was also selected.

"The installation team for Timber Windows of Guildford are often seen around our area, so we took comfort in their reputation and being well-known, and they didn't disappoint."



Slim sash windows finished in 'White' with 18mm astragal glazing bars and manufactured in Engineered Meranti Hardwood.





Slim sash window finished in 'White' with 18mm astragal glazing bars and decorative sash horns, manufactured in Engineered Meranti Hardwood.

“THE QUALITY OF THE FITTING WAS VERY HIGH, AND PARTICULARLY NOTABLE WHERE WE HAD A WINDOW SURROUNDED BY GLASS TILES, THAT NO DAMAGE WAS DONE.”



“THE SURVEY WAS GOOD, AS WAS THE SHOWROOM EXPERIENCE WITH GOOD, CLEAR KNOWLEDGE DEMONSTRATED THROUGHOUT THE PROCESS.”



CLASSIC COMPOSITION

In one of south London's many streets, lined with charming Victorian terraces, is the home of Mr & Mrs Callen, now adorned with a stunning new front door.

The Westonbirt door is reflective of authentic Victorian design with ornate mouldings and details. Finished in a shade complementary to Fired Earth 'Smoke Blue' with a White frame, it's a calming combination. Etched Star glass and Polished Chrome ironmongery are among the finishing details.

"The door gets a lot of attention from passers-by" the homeowners exclaim.

Having painstakingly restored the pathway tiles to their full splendour, the end result when combined with the door is the ultimate goal for those in search of kerb appeal.

Authentic enough for it to have looked the part when the house was first built while containing a modern day, high-security locking system.



Westonbirt conservation entrance door with toplight finished in a colour complementary to Fired Earth 'Smoke Blue', featuring Polished Chrome Doctor's knocker, escutcheon and Medium sized letter plate from Samuel Heath. The door also features Etched Star patterned glass as well as the house number etched onto Sandblasted glass in the toplight. Manufactured in Engineered Meranti Hardwood.

"It's exquisite!"

crafted
COMFORT





Flush casement windows finished in 'Cream' with 18mm astragal glazing bars and manufactured in Engineered European Redwood.

A SIMPLE PALETTE OF 'CREAM' AND 'PORCELAIN' HAVE HELPED TO RESTORE BRIGHTNESS TO THIS BEAUTIFULLY PROPORTIONED HOME.



Having lived in their early 19th century Warwickshire village farmhouse for ten years, the Markham's decided it was time to make their home more comfortable year-round.



"We previously had dark brown windows and tried to make the best of these by painting them a grey shade, but it never quite suited the house" Mr and Mrs Markham describe.

Slim sash windows finished in 'Cream' with 18mm astragal glazing bar and decorative sash horns. Manufactured in Engineered European Redwood.



Kingston entrance door finished in 'Porcelain' with Etched Star glass and Bronze Doctor's knocker, escutcheon and Medium sized letter plate from Samuel Heath.

ELEGANT entrance doors combined with **STYLISH** ironmongery, now provide much improved insulation, security and not to mention, a **WARM WELCOME**.

Now a FAMILY HOME, this traditional farmhouse bears the reminders of its past life as a working site, surrounded by barns and rolling fields.

'Cream' flush casement windows with simple, cottage style horizontal astragal bars, along with sash windows, now adorn the property, while new front doors are finished in the shade of 'Porcelain'.

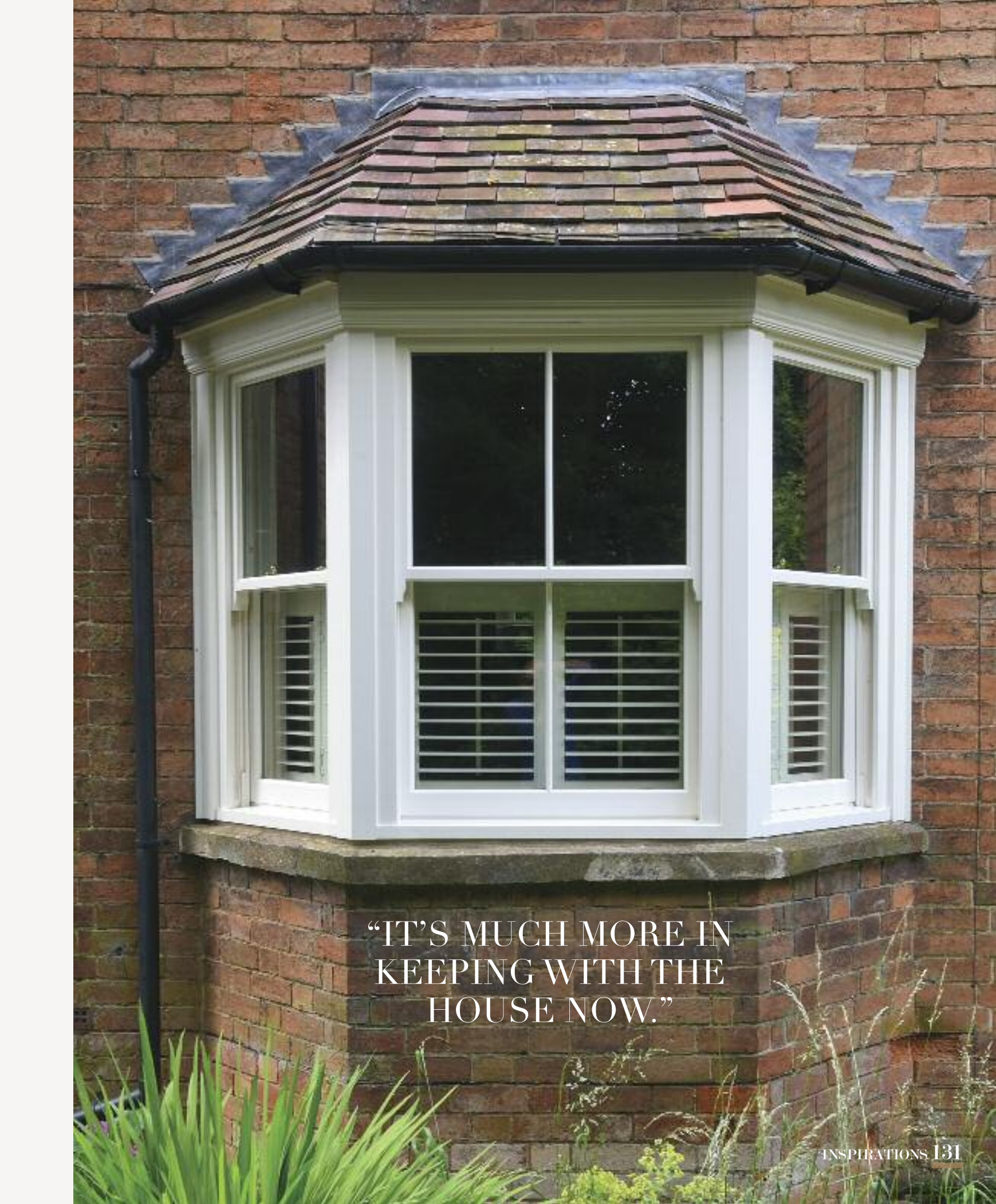
"The old front door used to let in terrible draughts, and the sash windows were beyond repair; they were dangerous really."

The owners have noticed a marked change in their homes since the installation, "the difference is unbelievable, it's been much warmer and no more draughts."




Staverton entrance door finished in 'Porcelain' with Black Cottage handle, accompanied by a flush casement window with arched toplight, finished in 'Cream' with 18mm astragal glazing bars.





“IT’S MUCH MORE IN
KEEPING WITH THE
HOUSE NOW.”



Flush casement windows
in French Grey externally
and Straw internally,
manufactured in Engineered
Meranti Hardwood, with
Antique Pewter Peardrop
handles; some with 18mm
horizontal astragal bars.

**“ Our approach has been to
use quality products throughout
the whole project. ”**

QUALITY SHINES

Through



formerly the post office in this North Yorkshire Moors village, the home of Mr & Mrs MacMillan has undergone a dramatic renovation project including an oak framed and stone extension.

Due to its location, the homeowners had plenty of things to consider, "this is a conservation village and is also within a national park meaning there were lots of restrictions and guidelines to follow, including providing samples of materials and colours we wanted to use."



Chalfont front door in French Grey externally and Straw internally, with matching French doors, manufactured in Engineered Meranti Hardwood with Pewter Avon handle and customer's own choice of knocker.

Their choices were dual coloured Engineered Meranti Hardwood flush casement windows and a Chalfont front door, painted French Grey externally and Straw internally. Across the back of the house, sets of large pane French doors are finished in the same colour choices, and liberate the newly extended kitchen and family area.

"When we visited the showroom, we just had the feeling that this was right: the products and the service. We could tell it was a reputable company."

Mr MacMillan explains the approach they took to the project, **"we've used quality products throughout the house: we could have gone for cheaper options in all areas, but we wanted to do this to the best level we possibly could, this included the windows and doors."**

Making the house comfortable to live in was a priority, **"we took a holistic approach to ensuring that the house was well insulated, and the windows and doors were a major contributor to the results we've achieved."**

"It's been a real passion to carry out this project, and we're really very happy overall, including the windows and doors, as we feel they look right, and are sympathetic to the style of the property."



THE SECRETS OF KERB APPEAL

HAS YOUR HOME GOT THE

LOOK?

Walk down any street in England and you can tell, almost instinctively, whether the doors and windows of a home really suit the structure of the building. When the windows are wrong it is blindingly obvious – but when they have been chosen well, or the original windows and doors preserved, the effect is often simply beautiful.

So what should you consider when investing in new Timber Windows?

For many homeowners, restoring the integrity of the original structure is paramount. Choosing windows and doors that faithfully replicate the appearance of the building in its heyday, but with 21st century performance, is now achievable with the Timber Windows range.



Before



Whilst some customers follow the conservation route, for others the opportunity to blend traditional and contemporary styles is a serious temptation. Pairing a stunning contemporary front door with beautiful box sash windows may give the individuality that your home has been longing for.



Before



Rest assured that any investment in Timber Windows will help to restore the real value of your home!



Before

Time was when every window frame in sight was white, or unsightly aluminium. Today the choice of factory applied colours and finishes available for all timber windows & doors adds a level of choice our predecessors would envy. With natural timber finishes, subtle shades of green, blue and grey, as well as pristine white and elegant black, the Timber Windows colour palette can help to highlight or to blend in.

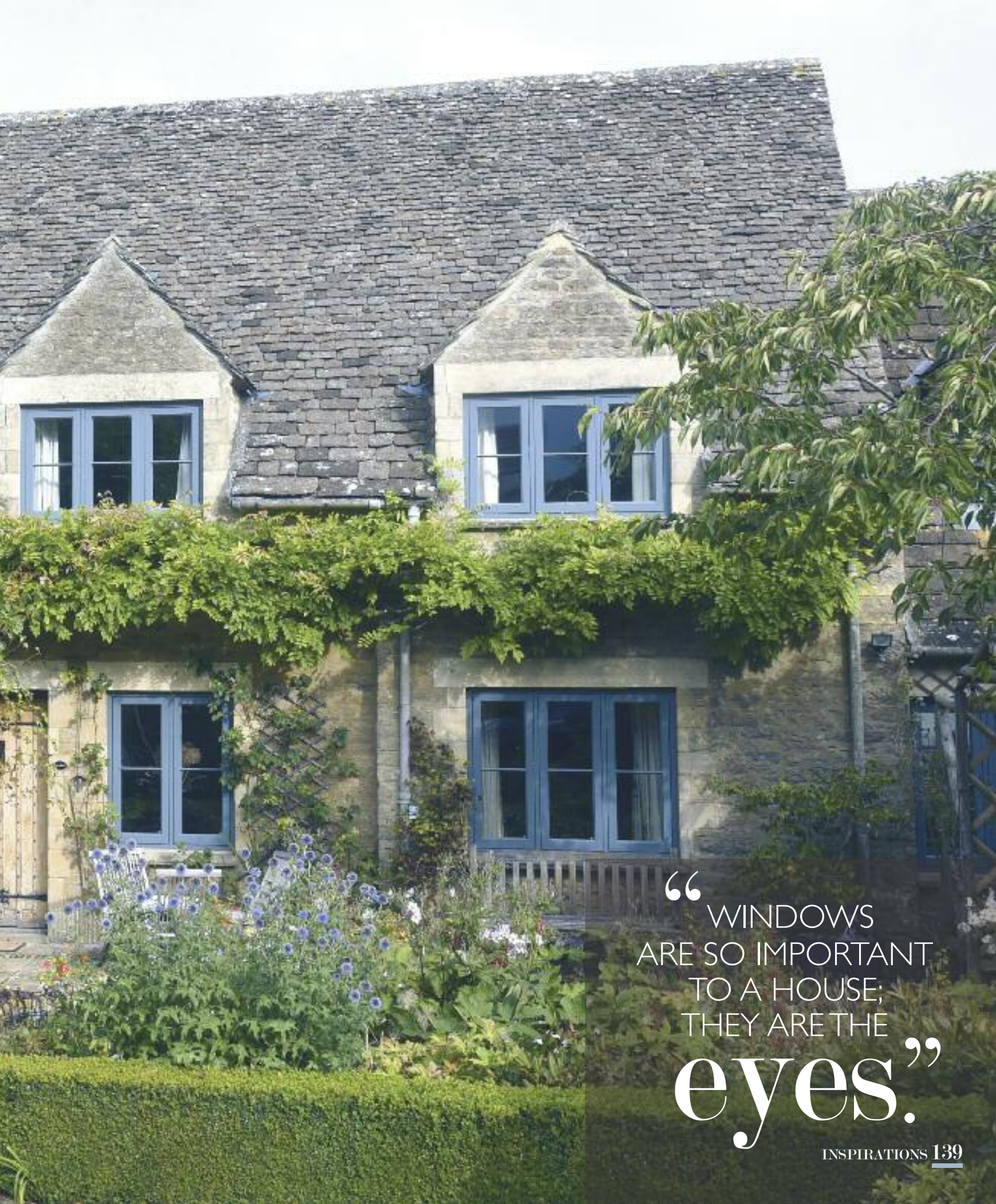
And finally let's not forget your neighbours, those passing by and even future purchasers. Style, colour and your choice of windows and doors all have a part to play in how your home is regarded – but rest assured that any investment in Timber Windows will help to restore the real value of your home.



eye ON DESIGN

“ THE PROPORTIONS MAKE ALL THE DIFFERENCE; GETTING THE HEIGHT TO WIDTH RATIO CORRECT ALONG WITH THE IDEAL NUMBER OF PANES, ARE ALL KEY TO A BALANCED LOOK. ”





“WINDOWS
ARE SO IMPORTANT
TO A HOUSE;
THEY ARE THE
eyes.”

Despite appearances, this former barn has no listed status, nor does it sit within a conservation area, but this didn't stop Mr & Mrs Spivey recognising how poorly suited the 1970s windows were.

Converted for residential use in the 1940s, the couple took ownership of this Gloucestershire village home just one year ago, "**the windows were the first job on the list**" they explain.

"We are thrilled with the changes!"

Urbane Grey flush casement windows with a single, fine astragal glazing bar give balanced sightlines; and it's not just the homeowners that have noticed, "*Neighbours and friends have commented on what a lovely choice and the difference it has made.*"

"We really feel like we've put our stamp on the house now."



“ FRIENDS & PASSERSBY ARE GLAD TO SEE THE BACK OF THE CHUNKY, WHITE PLASTIC FRAMES! ”



Flush casement windows finished in 'Urbane Grey' with 18mm horizontal astragal glazing bar. Manufactured in Engineered European Redwood.

THE NEARBY CIRENCESTER SHOWROOM IMPRESSED THE HOMEOWNERS



“
THE TEAM WERE
excellent
”
& THE PRODUCT OPTIONS WERE WELL DEMONSTRATED.

THE COLOUR OF URBANE GREY CROSSES BETWEEN A SHADE OF GREY
OR BLUE DEPENDING ON HOW THE LIGHT HITS THE FRAMES.



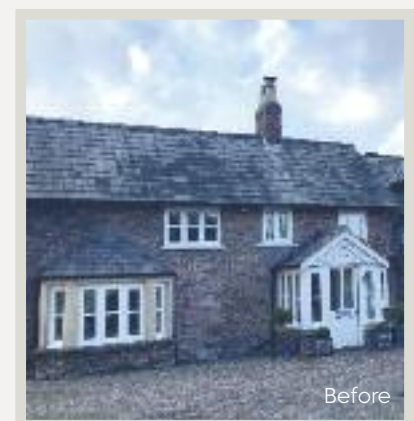


RURAL RETREAT

On a leafy lane in Cheshire, the rural home of Mr & Mrs Ruskin has received a gentle and sympathetic makeover.

Around 35 windows and door replacements were made covering the whole house, in place of “*horrible old windows*” in the words of Mrs Ruskin.

“When we moved in 12 years ago, I said to my husband at the time, that the windows and doors would need to be renewed, and since then we’ve been working on renovating the whole house.”



Bespoke Bardwell entrance door and Cottage casement windows finished in 'White', featuring 18mm horizontal astragal glazing bars, in Engineered Meranti hardwood.

“THIS HAS ALWAYS BEEN QUITE A COLD HOUSE, BUT WE HAVE NOTICED A MARKED DIFFERENCE IN HOW MUCH WARMER THE HOUSE IS”



Cottage casement window and French doors finished in 'White', featuring 18mm horizontal astragal glazing bars and a Reeded door handle in Polished Nickel.

“FOR A RELATIVELY SIZEABLE JOB, THE FITTING TEAM WERE ONLY HERE FOR FIVE DAYS – IT WAS VERY EFFICIENT.”

All the products were chosen in a classic shade of ‘White’ externally, featuring fine 18mm astragal bar designs. Internally, some of the windows are matched to blend seamlessly with the wall colours and the atmospheric room schemes.

“The whole thing has been very efficient throughout, from our initial visit to the showroom to the expedience and skill of the fitting team.”

Cottage casement window finished in a colour complementary to Farrow & Ball ‘Down Pipe’, featuring Polished Nickel Reeded handles and matching pegstays.



Cottage casement window finished in a colour complementary to Fired Earth ‘Carbon Blue’, featuring a Polished Nickel Reeded handle and matching pegstay.





PERFECT *formation*

A previous customer of Timber Windows, the Bray family called on us again when they moved to their new property, situated in an Area of Outstanding Natural Beauty outside Harrogate.

Their rather dramatic home has undergone a full renovation, something that the owners recognised was needed when purchasing, and was undertaken for nine months prior to them moving in.

Speaking specifically about the windows and doors that the house came with, Mr Bray comments, *“they were poor quality, the glazing units were leaking, and all this despite only having been ten years old.”*

Bardwell entrance door finished in 'French Grey' with 18mm astragal glazing bars and Polished Chrome Reeded handles. Flush casement windows in matching colour finish.



Fixed flush casement windows finished internally in 'White' with 18mm astragal glazing bars.

“THE WINDOWS ARE MUCH MORE ELEGANT THAN BEFORE, AND THE COLOUR HAS REALLY LIFTED THE HOUSE.”

IN TOTAL, 70
WINDOWS AND
DOORS HAVE
BEEN REPLACED
THROUGHOUT
THIS DRAMATIC
PROPERTY.

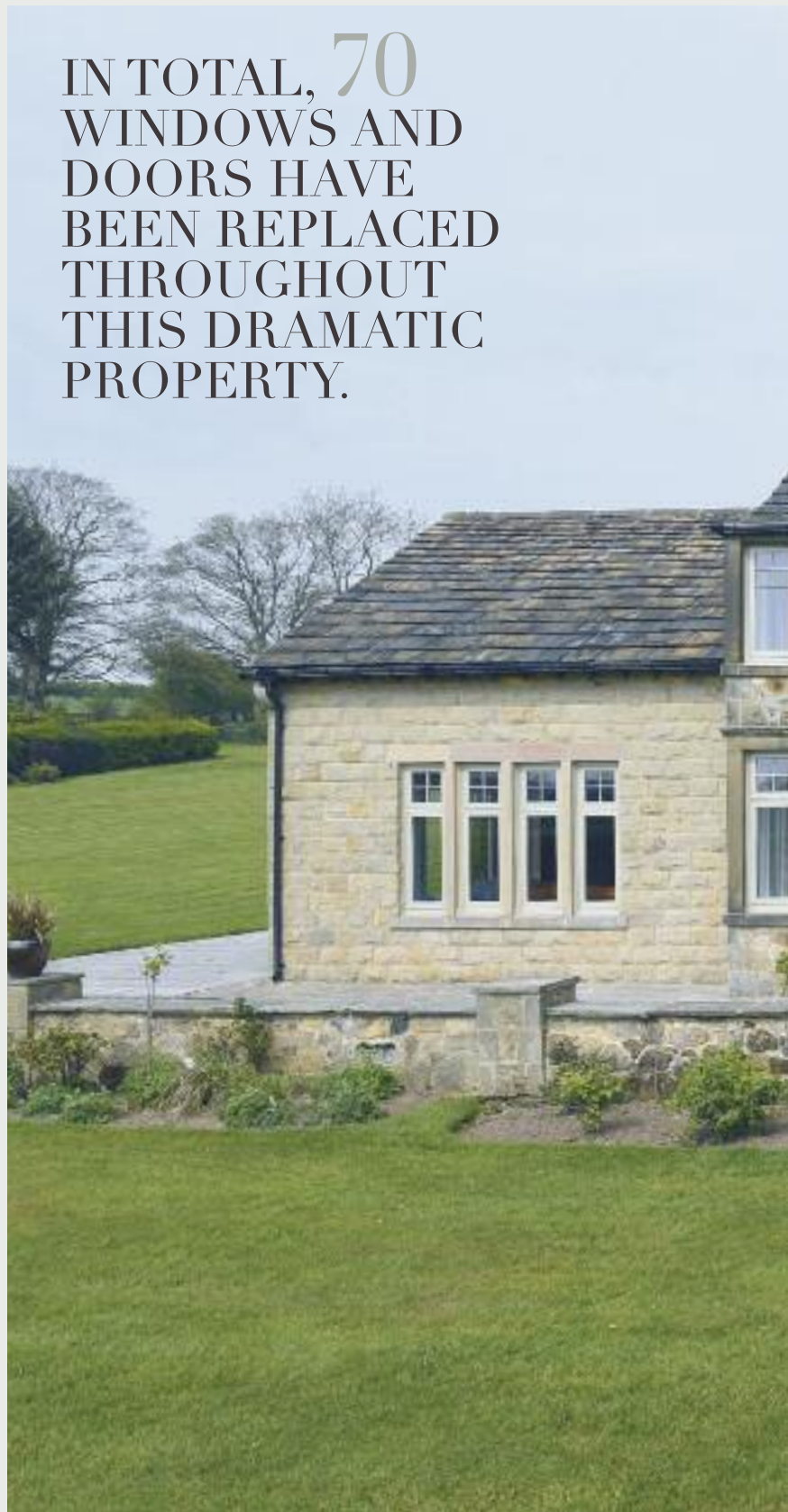


*Polished Chrome
Reeded handle.*



A total of 70 windows and doors were installed, finished in 'French Grey' externally and 'White' internally. Flush casement windows and various formations of doors now enhance the house.

"The new products are all of a similar design and formation to those previously, except for being much more elegant and we've ensured that the designs and glazing bars are balanced throughout."







Bi-fold doors finished in 'French Grey' with 18mm astragal glazing bars and Polished Chrome Reeded handle.



Bespoke, arched French doors finished internally in 'White' with Polished Chrome Reeded handles.



French doors and flush casement windows finished internally in 'White' with 18mm astragal glazing bars and Polished Chrome Reeded handles.

LET THE LIGHT FLOW

In a village near Macclesfield, Cheshire, the early 1800s terraced cottage of Mr & Mrs Upton has had a long-awaited face lift, *“we’ve wanted to change them for a long time, the previous windows and door were old and had rotted”*.

“We looked down the street for inspiration, but no-one has the originals anymore, and no-one had done anything we wanted to mimic, so we did our own thing to stand out, in the best way.”

“David from the Knutsford showroom was able to present digital mock ups of our house, this really helped our decision making and to see options we hadn’t even considered.”

A Chalfont front door has a combination of reassuring solidity and glass panels that allow extra light through, while the black hardware gives a nod to the history of the house. Cottage flush casement windows with slender 18mm astragal bars are presented in a French Grey painted finish to provide a unified appearance with the door.

“The front rooms are so much lighter now – this is despite us thinking we may have to make a compromise on this in order to have the bar design we liked, so it has been a revelation to discover that we weren’t sacrificing light.”

“We’re absolutely thrilled with how it has turned out, and are just so proud of how the house now looks.”

“

HAVING A FAIRLY BUSY ROAD TO THE FRONT OF THE HOUSE, WE’D OFTEN BEEN DISTURBED BY PASSING PEDESTRIANS AND TRAFFIC, BUT IT IS SO DIFFERENT AND QUIET NOW.”




Cottage flush casements and Chalfont entrance door finished in 'French Grey', manufactured in Engineered European Redwood.

“
WE’VE NOW GOT
THE BEST-LOOKING
HOUSE IN THE
VILLAGE!”



BLACK ARCHITECTURAL
HARDWARE PROVIDES A
NOD TO THE HISTORY OF
THIS EARLY 19TH CENTURY
COTTAGE.

A close-up, low-angle shot of a window frame. The frame is white with dark grey or black glazing bars. A large pane of blue-tinted glass is visible, set within the frame. The background shows a white wall and a portion of a dark, textured surface, possibly a roof or ceiling.

IT'S A COMMON MISCONCEPTION THAT HAVING GLAZING BARS IN WINDOWS WILL MAKE FOR A DARKER ROOM, THIS IS HOWEVER NOT THE CASE AS HIGH-QUALITY GLASS WILL ALLOW FOR A LIGHT FILLED ROOM, WHILE GLAZING BARS ADD A LEVEL OF INTEREST AND DETAIL.



“THEY LOOK
AS GOOD TODAY,
AS THE DAY THEY
WENT IN
[12 YEARS AGO].”

THROUGH the generations

Some 12 years ago, this north Essex village cottage was treated to new windows from Timber Windows by owners, Mr & Mrs Lockwood.

Having purchased the 400-year-old cottage around the turn of the century, the Lockwood's embarked on a thorough renovation project to return it to its former glory.

"The house had been spoilt by 'being updated' Mr Lockwood explains, we purchased a timber frame property that had original plasterwork, yet all this beauty had been masked by layers of cement and the addition of uPVC windows."



The structure in the 1920s.

**“ALL THE
BENEFITS OF
MODERN
WINDOWS, YET
COMPLEMENTING
THE PERIOD LOOKS
WE WERE LOOKING
TO ACHIEVE.”**

“THEY REALLY LOOK GREAT NOW WE HAVE HAD THE TRADITIONAL PLASTER ADDED TO THE HOUSE TOO.”

Back in 2008 when the couple decided it was time to replace the windows, as with the rest of their project, they conducted thorough research, “*we shortlisted a few companies, and invited them round to quote. We found it an easy choice to go with Timber Windows, as we found that the representative really listened to what we were trying to achieve, gave great advice and demonstrated that the quality was fantastic.*”

The owners are as happy today as they were 12 years ago, stating “*they are great quality and very low maintenance*”, even recalling the installation, “*the fitters were professional and friendly; we still say how great they were and made the job so much easier.*”



Flush casement windows finished in 'White', with 27mm astragal glazing bars and manufactured in Engineered Meranti Hardwood.



“KNOWING WE WERE PLANNING TO TAKE THE HOUSE BACK TO ITS ORIGINAL GLORY, PICKING THE RIGHT WINDOWS WAS A CRUCIAL DECISION.”



TIMBER WINDOWS LISTED

Timber Windows Listed - a collection of specially designed windows and doors that have gained positive feedback and approval from planning authorities across the UK.

We have assisted homeowners with buildings from a host of historical periods to meet the planning, conservation and preservation rules for their particular area with authentically designed timber windows and doors.

Knowing and understanding these rules should always be your first step. The authorities assess on a case by case basis, considering the significance and circumstances of the changes that you wish to make. So for this reason it is always best to make an initial approach to your local planning authority.

Our aim is to provide timber windows and doors that not only satisfy these rules but also enhance your home - improving insulation, sound proofing and day-to-day operation - whilst maintaining an authentic appearance for many, many years to come.





Historical preservation with **MODERN STANDARDS**

Choosing the most appropriate windows and doors is one of the most important decisions you will make for your home. This is never more poignant than when dealing with properties of conservation and listed status.

Windows and doors are among the most obvious components contributing to a building's style and appearance, so ensuring that these are correct, both from the perspective of aesthetics and regulatory compliance, is vital.

Timber Windows Listed marries preservation of style with exacting methods of construction to produce levels of comfort and convenience that our forebears would envy. The use of engineered timber eliminates twisting, warping and draughts, whilst modern glazing, even in single glazed units, is both warmer and quieter than original glass.

With traditional hand processes and rigorous quality checking, every window and door passes through the hands of experienced, time-served craftsmen. Comprehensive guarantees on every window and door provide lasting peace of mind.





Time honoured skills

OLD MEETS NEW

A meeting of minds – our factory combines state-of-the-art computer controlled machinery with good, old fashioned craft skills – each as important as the other to the overall finish.

With many decades of experience to draw on, the creation of historically authentic windows and doors is the speciality of our highly skilled team.





“With many decades of experience to draw on, the creation of historically authentic windows and doors is the speciality of our highly skilled team.”

All of our windows and doors incorporate the very best glazing, timber and coating technologies to enhance the enjoyment of your period home all year round.

The use of engineered timber ensures that all of our windows and doors will not warp or twist, stick or rub.

Fungal & Insect	Sealed Unit	Hardware	Workmanship	Paint	Stain
					
30 YEARS GUARANTEE	10 YEARS* GUARANTEE	10 YEARS GUARANTEE	10 YEARS GUARANTEE	12 YEARS GUARANTEE	6 YEARS ⁺ GUARANTEE

* 5 years for 14mm double glazed units. + Not applicable to putty finished products.





Why Timber Windows

LISTED?

Finding a local craftsman to repair your period windows may appear an easy solution- **BUT**...you may finish up with windows with so many repaired elements there is little of the **'ORIGINAL'** left!



A combination of window repairs taken to extreme levels!



Timber Windows offer **A COMPLETE SERVICE**

An endless cycle of repair

Rather like the story about grandmother's broom - where the original brush and handle had both worn out and been replaced - listed window repair can have similar issues.

Rotten wood carefully removed, only to be filled with plastic filler, cracked glass panes replaced with heavier modern glazing leaving sash windows closing by themselves, modern putty and seals installed... the windows may look the same once painted, but inevitably their appearance and functionality will not last for long.

With an endless repair cycle - repairing the repair - inevitably little of the original window is left. Original solid wood frames will also continue to warp, swell, twist and stick.

Replacement where permitted

Where replacement is agreed, the Timber Windows Listed Collection can provide virtual like for like alternatives.

Years of research, examining the nuances of period window and door design and construction, has resulted in a range that has already satisfied planning departments in some of this country's most desirable historic areas.

The authentic appearance is achieved using engineered timber which is stronger, longer lasting and guaranteed to remain a perfect fit whatever the weather. Our glazing options will provide better insulation and sound proofing, whilst the paint or stain is applied in a closely controlled environment to ensure quality and consistency.

Continual development and innovation mean our Listed product range will suit an extremely wide variety of British property types and historic periods, no matter how grand or modest.



Before





Glazing options



4mm single glazed.



14mm ultra slim unit with krypton gas.



24mm with argon gas/18mm with krypton gas high performance units.

(Diagram shows 24mm unit)

GLAZING MATTERS



“Of crucial importance to the acceptability of newly crafted windows and doors in historic settings, is the specification of glazing”

Of crucial importance to the acceptability of newly crafted windows and doors in historic settings, is the specification of glazing.

Referencing existing buildings and local style of fenestration is the key to closely replicating window and door design.

Through bars and putty glazing are bespoke elements that set our Listed range apart.

The range carries a number of glazing options to suit everyone's requirements from a conservation and a lifestyle stand point in terms of specification, giving the required aesthetics while regulating heat effectively and vastly improving sound insulation.

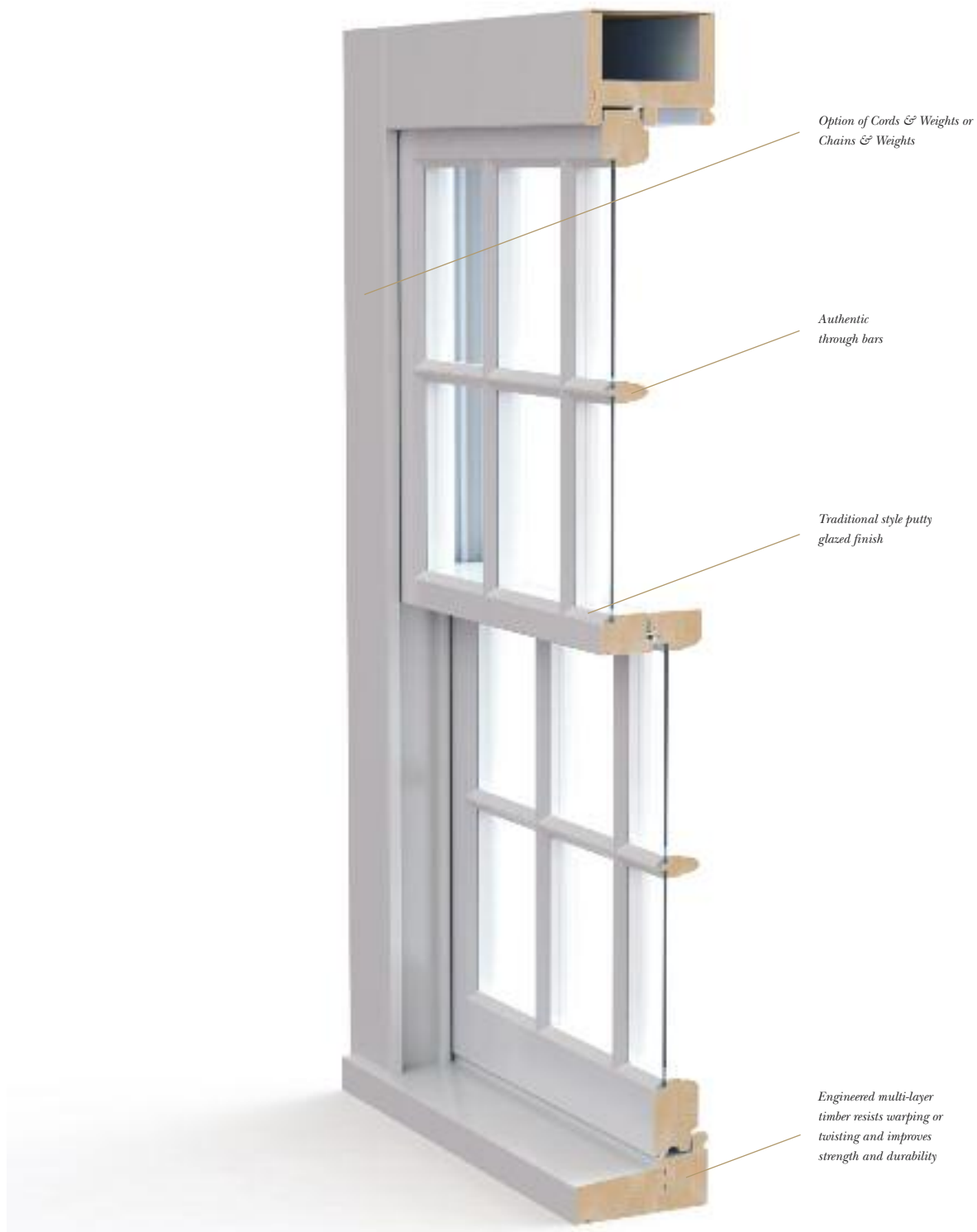
The 4mm single glazed pane and the ultra slim double glazed 14mm unit filled with krypton gas are hand finished with a traditional style putty and are available with a 22mm wide glazing bar, all features designed for the most stringent planning areas.

Our high performance 24mm or 18mm double glazed units, filled with argon gas and krypton gas respectively have the option of either an 18mm or 27mm wide glazing bar, ideal where regulatory restrictions are less rigorous.



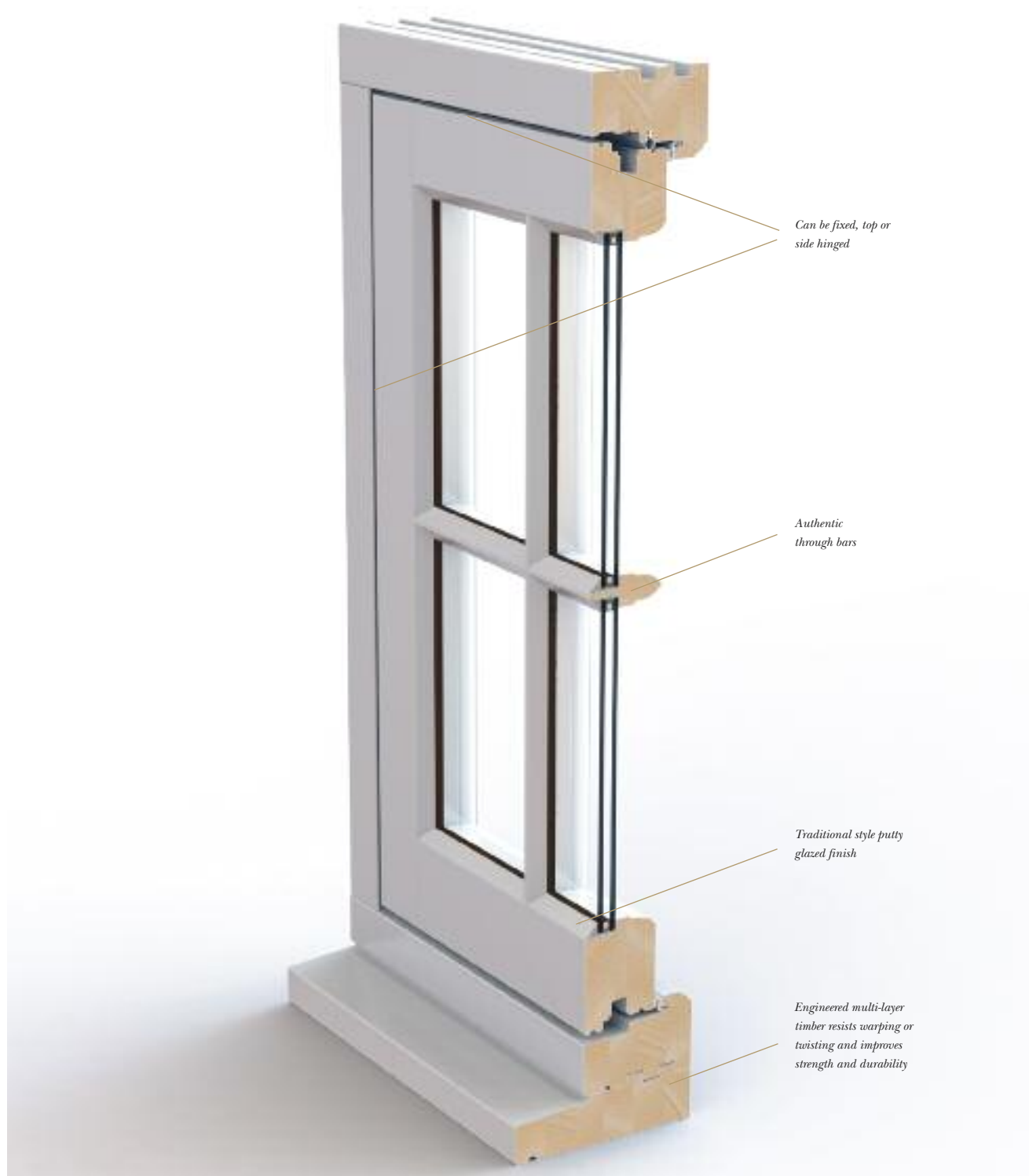


Traditional sash window with 4mm single glazing





14mm ultra slim double glazed casement window



THE REASSURANCE OF A LOCAL SPECIALIST



44

STUNNING SHOWROOMS NATIONWIDE

The Timber Windows service is delivered with care by knowledgeable local specialists whose reputation is built on providing an attentive service from initial enquiry to the completion of your project.

WHAT TO EXPECT

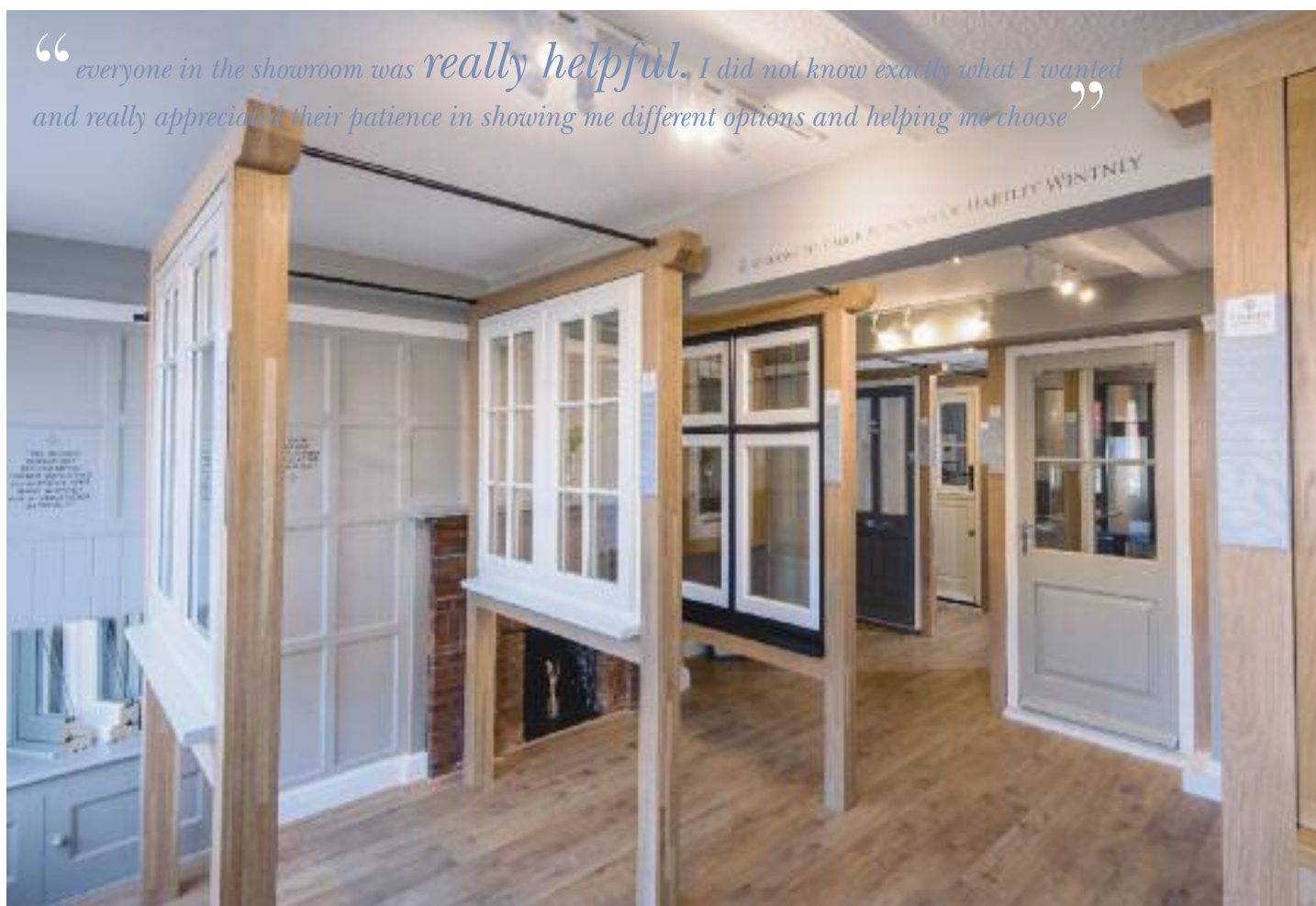
Our local showrooms provide the perfect environment to browse the many options available, with expert guidance on hand to help you make an informed decision.

Showrooms

1. Amersham
2. Bournemouth
3. Blandford
4. Caterham
5. Cardiff
6. Carmarthen
7. Channel Islands
8. Cheltenham
9. Cirencester
10. Clifton (Bristol)
11. Colchester
12. Denbigh
13. Dulwich
14. Esher
15. Fornham (Bury St Edmunds)
16. Guildford
17. Harborne, Birmingham
18. Harrogate
19. Hartley Wintney
20. Heathfield
21. Henley on Thames
22. Hereford
23. Highgate
24. Honiton
25. Horndean
26. Horsham
27. Ingatestone
28. Knutsford
29. Leamington Spa
30. Lincoln
31. Maidstone
32. Moreton-in-Marsh
33. Nottingham
34. Olney
35. Oxford
36. Ripley
37. Salisbury
38. Sheffield
39. St. Albans
40. Tavistock
41. Tunbridge Wells
42. Wimbledon
43. Winchester
44. Woodbridge



THE PERFECT ENVIRONMENT TO BROWSE...



... WITH EXPERT GUIDANCE ON HAND!



HELPING YOU TAKE THE *next steps*

Visit one of our beautiful showrooms & talk to the experts...



Timber Windows **CHOICES** provides you with insight into the options available to help you achieve the perfect windows and doors for your home, including:

A colour chart with printed samples of our most popular shades & timber stain options.

Decorative glazing options, including authentic Victorian stained glass motifs.

Patterned & etched glass, privacy glass and reversed out house number options.

Arched and shaped windows, including gabled and triangular frames.

Ironmongery and fittings for sash windows, casement windows and front doors, including our exclusive Samuel Heath range.

All of our most popular Entrance Door styles, including conservation and contemporary.



www.timberwindows.com/showrooms




TIMBER
WINDOWS

BEAUTIFUL, HAND-MADE
TIMBER WINDOWS & DOORS

T: 0800 030 2000

www.timberwindows.com

